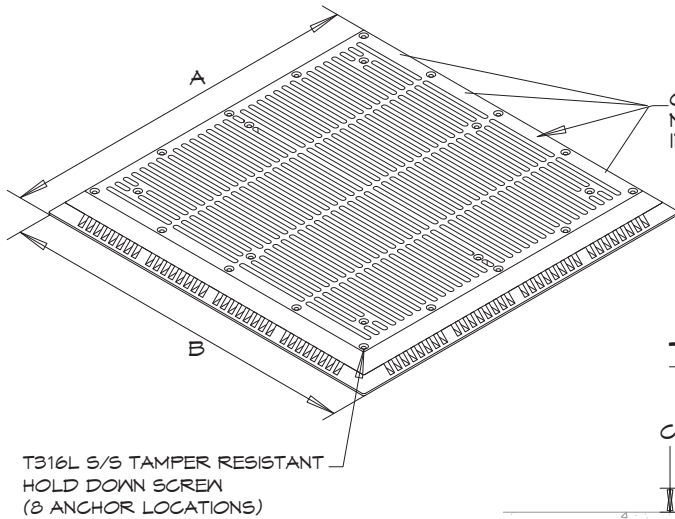
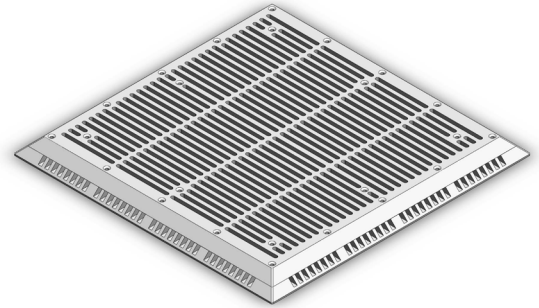




Technical Details - VGB GPM - Drain Grates

VGB Certified GPM Drain Grates - Standard sizes

Natare's Certified VGB GPM Drain Grates are fabricated from a marine grade polymer and are environmentally stabilized to withstand the harshest aquatic environment to meet the requirements for the 2007 VGB Pool and Spa Safety Act. Our system meets and exceeds the allowable velocity through the open area of each grate to further enhance safety measures. We offer standard sizes and custom certified sizes to meet most any project need.

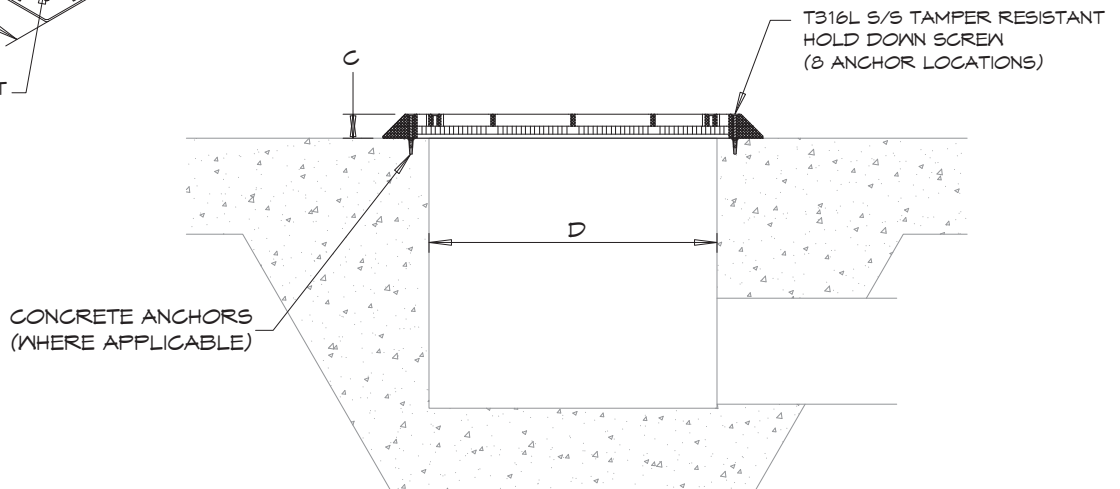


GRATE TO BE MARKED AS INDICATED

GPM Unblockable Anti-Entrapment Grate:
 (Marked as follows)

- For Single or Multiple drain use
- (Flow Rate) GPM main drain grate
- Life: 10 years
- Wall or Floor
- MFG. by Natare Corporation
- Model #: VGB-GPM-(size)x(size).G
 VGB 2008

TYPICAL INSTALLATION



Part Number	Ref. Size (D) *	Actual Width (A)	Actual Length (B)	Actual Height (C)	Total Open Area	Design Flow Rate **	Flow Velocity (F.P.S.)	Percent Open Area
VGB-GPM-18X18.G	18 x 18	23.75 in.	23.75 in.	1-1/2 in.	207.8 sq. in.	648 GPM	1.0	34.3%
VGB-GPM-24X24.G	24 x 24	29.75 in.	29.75 in.	1-1/2 in.	349.5 sq. in.	1,089 GPM	1.0	37.9%

* Reference sizes represent the size of drain the grate will fit over, not actual dimensions.

** Main Drain Grate flow rate is calculated using the total open area of the grate at a velocity of 1.0 fps. Rather than the maximum flow rating of the grate as determined by the entrapping force calculation of ASME 112.19.8a - 2008 section 2.3.1.2, which allows 1,102 GPM for the 18 x 18 grate or 3,341 GPM for the 24 x 24 grate.

Notes:

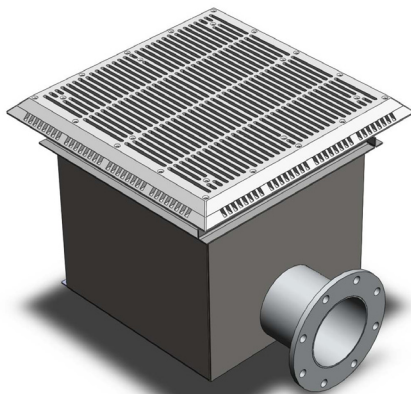
- Unblockable grate complies with the requirements of ASME A112.19.8a - 2008 for field fabrication suction outlets
- VGB-SS-18X18.G - Grate intended for use over 18" or smaller drain openings.
- VGB-SS-24X24.G - Grate intended for use over 24" or smaller drain openings.



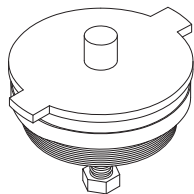
Technical Details- VGB GPM Grates and Sump Units

VGB Certified GPM Drain Grates and Sump Units

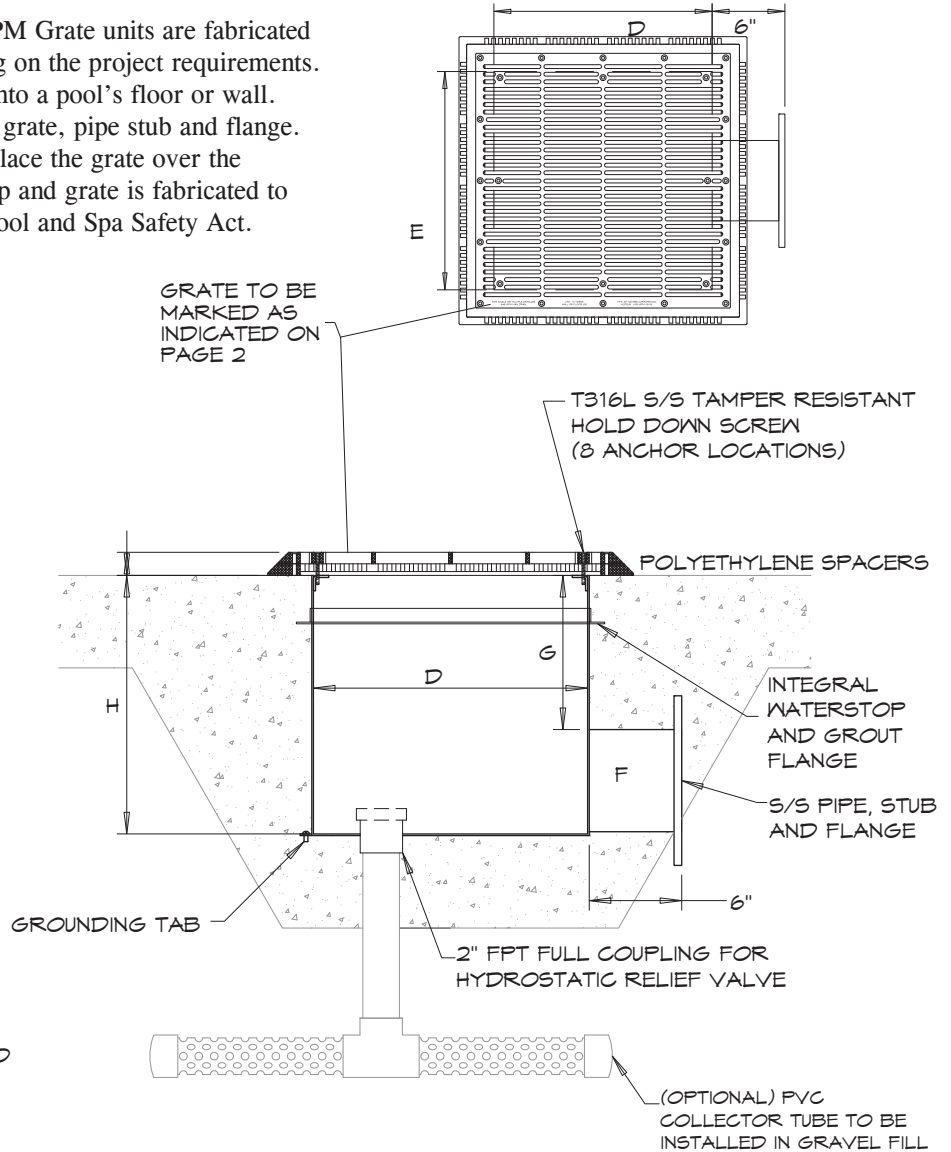
Natare's VGB Stainless Steel Sump and GPM Grate units are fabricated from 304L or 316 stainless steel, depending on the project requirements. Our grate and sump units can be installed into a pool's floor or wall. Each unit comes assembled with the sump, grate, pipe stub and flange. Once the sump has been installed, simply place the grate over the opening and screw it into place. Each sump and grate is fabricated to specification and complies with the VGB Pool and Spa Safety Act.



OPTIONAL



COMMERCIAL HYDROSTATIC RELIEF VALVE 2" 34-605
 HEAVY DUTY CAST BRONZE BODY AND VALVE PLATE, VALVE SEAT GASKET, BRASS COVER PLATE



Part Number	Drain Size	Total Open Area	Design Flow Rate	D	E	C
VGB-GPM-18x18.U	18 x 18	207.8 sq. in.	648 GPM	18"	18"	1-1/2"
VGB-GPM-24x24.U	24 x 24	349.5 sq. in.	1,089 GPM	24"	24"	1-1/2"

Stub Size - F (NPS)	G	H
3"	7"	11"
4"	8"	13"
6"	11"	18"
8"	14"	23"
10"	18"	29"
12"	21"	34"

• "D" AND "E" are the measurements of the sump box. The grate size is larger than the box. For specific grate size please refer to size chart on page 2.

Notes:

- Unblockable grate complies with the requirements of ASME A112.19.8a - 2008 for field fabrication suction outlets
- VGB-GPM-18x18.C - Grate intended for use over 18" or smaller drain openings.
- VGB-GPM-24x24.C - Grate intended for use over 24" or smaller drain openings.
- Main drain assembly to be constructed of 12 gauge T304L stainless steel material unless otherwise specified.