



NataDek™ and SoftDek™ Floor and Deck Surfacing

Waterproof flooring and decking for pool surfaces, pool
decks and other wet environments

A 10-year full replacement warranty guarantees satisfaction.



NataDek™ and SoftDek™ leisure surfacing creates a comfortable, durable and watertight floor or deck surface area around pools, spas, water play areas, and aquatic facilities.

Manufactured from a special PVC/polyester composite, NataDek is a resilient, dependable, low- maintenance surface.

What is NataDek™ leisure surfacing?

Specifically designed for wet recreational environments, waterparks, aquatic facilities and swimming pools, NataDek is a specially formulated PVC/polyester composite that can be installed over concrete, tile, masonry and wood surfaces. This waterproof, slip-resistant surface resists staining, deterioration, delamination, cracking and ultraviolet light. NataDek provides a safe and sanitary surface.

Surface Preparation and Installation

NataDek installs over any reasonably smooth surface (no asphalt, tar or oil based surfaces), including existing coatings, as long as a bond exists between the top coating and the substrate. Adhesive One®, a moisture cured urethane, is used to adhere NataDek and edge sealant is applied to seal seams. NataDek may be combined with vinyl cove base, other standard moldings, and trim components to create the finished installation. NataDek may be installed by Natare technicians or local commercial flooring contractors.

ASTM C1028 Certified Slip-Resistant

NataDek is a certified slip-resistant flooring system under ASTM C1028. With its comfortable, textured surface, NataDek provides safe, sure footing no matter where it is used. It is the only slip-resistant surface developed specifically for aquatic facilities, shower and locker rooms and other wet recreational environments.

NataDek™ Textures and Color Choices

NataDek is offered in a great variety of standard and custom colors to brighten up your facility to your liking.



Before NataDek™



After NataDek™

Cleaning and Maintenance

NataDek's non-porous design will not support the growth of common wet environment bacteria, algae, molds and mildew. In order to maintain its beauty and keep the slip-resistant surface working its best, regular cleaning is required.

Life Expectancy

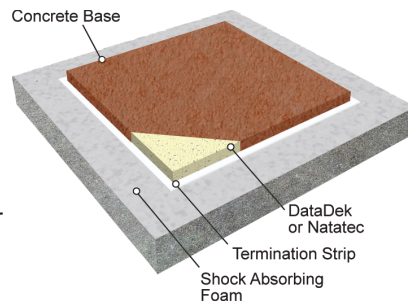
NataDek is manufactured from a PVC/polyester composite that makes it durable and long lasting. Actual field observation of NataDek installations indicates a projected life expectancy of 10 years or greater depending on environment, use and traffic.

NataDek™ & SoftDek™ Systems



SoftDek™ Shock Absorbing Recreational Surfacing

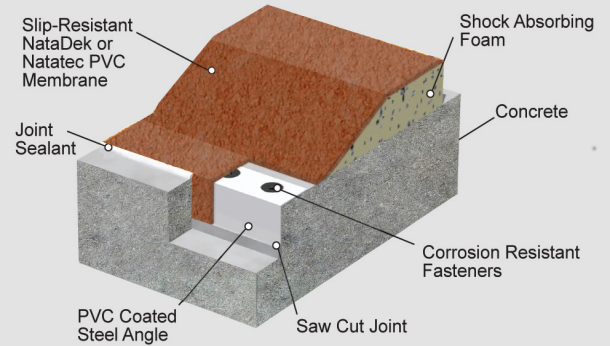
The SoftDek system combines our Natatec membrane or NataDek flooring with a shock absorbing cross-linked polyethylene foam to create a comfortable and safe water environment. With up to four inches of this closed-cell energy absorbing foam, SoftDek stands up to repeated use while maintaining its shape and comfort. Unlike urethane coated foams and granular rubber surfaces, SoftDek does not require adhesives and chemicals to prevent delaminating and peeling. Utilizing Natare's watertight anchoring system, SoftDek is held securely in place over most surfaces including paint, plaster, urethane, wood, tile, concrete, fiberglass and acrylic.



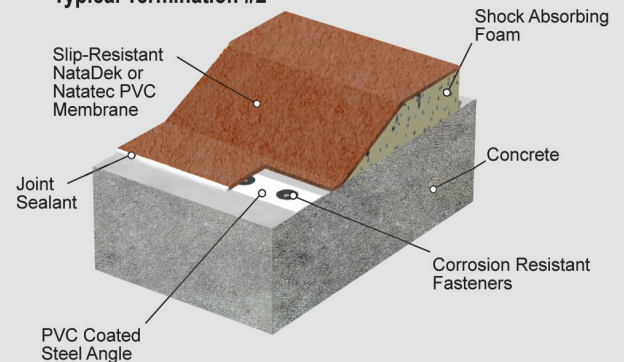
SoftDek™ Safety Pad

SoftDek surfacing is also available as a sealed safety pad. Permanently anchored, SoftDek safety pads can withstand repeated impact and use. Ideal for pool edges or around water play equipment, SoftDek provides a safer play environment for children. Prefabricated pad sizes are available from 4 to 10 feet in length and from 2 to 6 feet in width. Custom pads may be made to any size. The durability of our system is proven daily in some of the busiest aquatic facilities, and is backed by a full replacement warranty.

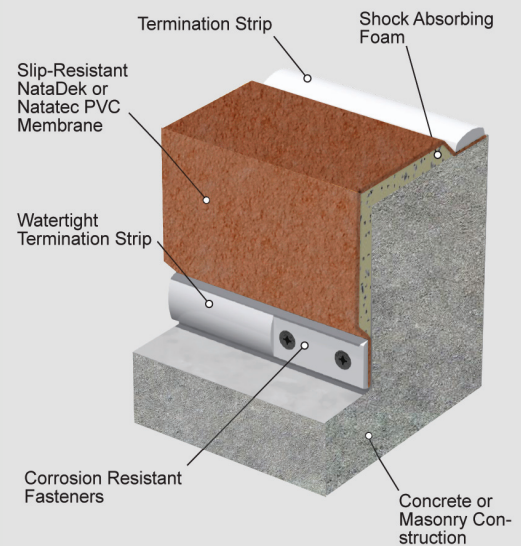
Typical Termination #1



Typical Termination #2



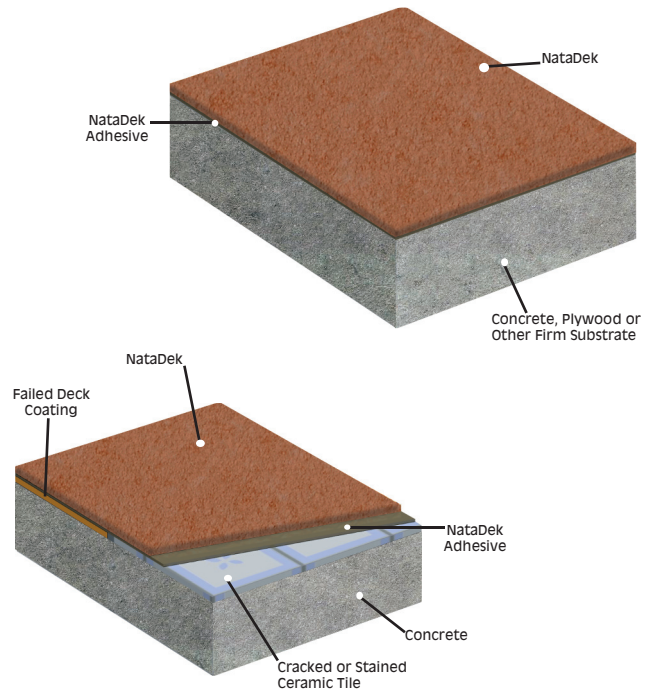
Typical Edge / Corner Detail



Benefits of NataDek Floor and Deck Surfacing System

- Safe and Slip-resistant**
 Its textured surface surpasses the ASTM C1028 designation for slip-resistant surfaces. Your customers will be safer from slipping on wet floors and decks.
- Waterproof and Watertight**
 The specially formulated PVC/Polyester composite insures that water cannot penetrate this system. Our color match seam sealer and special adhesives assure firm secure placement with the waterproofing you need.
- Long Life Expectancy**
 Actual field observation of our NataDek systems indicate a projected life expectancy of 10 years or more depending on the environment, use and traffic.
- Cool and Comfortable**
 NataDek stands up to a wide range of temperature extremes. Unlike concrete, NataDek will not crack under extreme temperature variables, and stays comfortable to walk on.
- Easy to Install**
 Ideal for renovation and new construction, NataDek easily installs over most surfaces including wood, tile, concrete, fiberglass and steel.
- Easy to Maintain**
 NataDek is a resilient, dependable, low maintenance surface. NataDek cleans easily with standard cleaning products. No acid-washing or harsh chemicals are needed.
- Cost Effective Solution**
 NataDek is a cost effective solution for covering unsightly surfaces that have been repeatedly patched, or are cracked, worn and falling apart.

NataDek - typical installation over concrete or tile.



NataDek - typical installation over concrete or tile.

