



Whirlpools, Spas and Hydrotherapy Pools

Our hydrotherapy systems are pre-engineered, easy to install, and durable enough for heavy long-term use.

A 10-year full replacement warranty guarantees satisfaction.



Natare whirlpools, spas and hydrotherapy pools take the guesswork out of pool and spa design.

Our stainless steel whirlpools and spas provide the soothing effects of water in motion for any facility.

Stainless Steel Whirlpools, Spas and Hydrotherapy Pools

Our stainless steel whirlpools and spas are ideal for health spas, hotels, hospitals, rehabilitation clinics, and just about anywhere the soothing effects of hot water in motion are desirable. Each Natare system is pre-engineered, easy to install and durable.

Our hydrotherapy pools and spas are offered in a wide range of sizes, depths and shapes with options of complete mechanical and filtration systems, ADA access equipment, rehabilitation systems, counter swim and hydrotherapy jets. Whether your project requirement is inground, freestanding or elevated, our systems have withstood the test of time, out lasting concrete, fiberglass, and other systems.

Natare pool systems will provide years of trouble-free service with minimal upkeep and maintenance. We make sure your systems are designed to provide sparkling clean and clear water.

Construction

Natare hydrotherapy pool systems start with our proven stainless steel construction system. In a hospital, clinic or therapy situation, stainless steel is the ideal pool construction material. With its low maintenance, virtually unlimited lifespan and hygienic qualities, whirlpools and spas are the perfect fit. They will not crack, deteriorate or leak and the stainless steel finish is easy to maintain and attractive.

Stainless steel fabrications have proven to outlast all other materials. The non-porous characteristics of stainless steel provides durability and strength creating a shell that will not delaminate, blister, or crack.

Our stainless steel whirlpools and spas provide the soothing effects of water in motion for any facility.



Hydrotherapy Pools



Mechanical Systems

Natare's spa and hydrotherapy pools can be provided with cost-effective and easily maintained mechanical systems. Select the recirculation, disinfection, filtration and heating system that is right for your budget, either as a totally automatic system or with simple manual operation. Whether it's our unique MicroFlo™ and MicroCell™ filtration systems or quality systems from other top manufacturers, your spa or hydrotherapy pool can be tailored to your unique requirements.



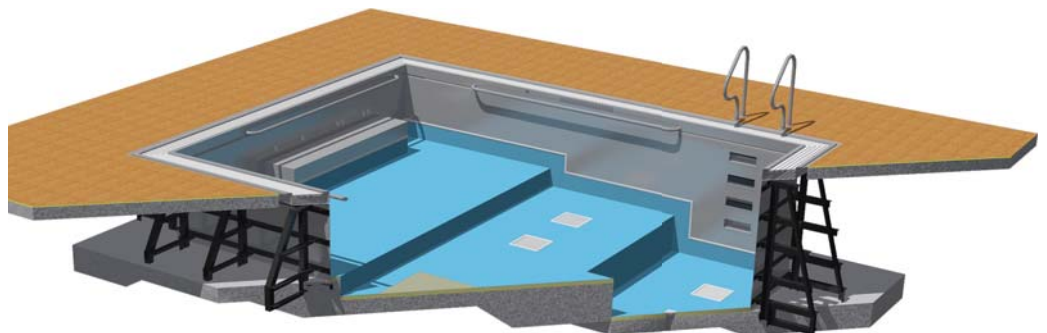
Hydrotherapy systems to suit your needs

Natare offers a complete line of stainless steel spas, which include all of the features and benefits associated with our stainless steel swimming pools. You may choose from custom pre-engineered units, which easily drop into the designated area, or select a custom-fabricated, site-built spa.

Natare also designs and manufactures a variety of special use pools and tanks including plunge pools, underwater weighing, individual hydrotherapy tanks and rehabilitation systems.

For larger therapy pools and spas requiring extra creativity and flexibility, we adapt our pre-engineered swimming Pool Systems and integrated components to meet the needs of today's most innovative spa designs or the special requirements of hydrotherapy and aquatic exercise.

Natare has standard therapy pool designs, configurations and options that can be tailored to your needs. Parallel bars, access ramps, padded floor surfaces, resistance jet units and even underwater treadmills can be incorporated into your hydrotherapy pool.



It all starts with stainless steel

Our hydrotherapy systems take the worry and guesswork out of hydrotherapy pool or spa design. Often, over emphasis is placed on the features or optional equipment while little thought is given to the all-important pool structure or shell. While there are several different materials to create the pool shell, our experience and knowledge dictates that stainless steel is the far superior material of choice. Each Natare hydrotherapy pool and spa starts with our proven stainless steel construction system.

In a hospital, clinic or therapy situation, stainless steel is the ideal pool construction material. With its low maintenance, virtually unlimited lifespan and hygienic qualities, our whirlpools and spas are the perfect fit.

Our elevated hydrotherapy pools or spas are specially designed for projects that require installation above the ground floor. These all-welded stainless steel units are structurally certified, completely watertight and can be custom designed and fabricated to provide exactly the right fit for your facility.



Optional Features

Features of a whirlpool, therapy pool and spa can include hydrotherapy, terraced depths, temperature modulation, underwater exercise equipment, submerged walking tracks, underwater viewing/video windows, access equipment, counter-swim systems as well as parallel bars, exercise bars and walk-in step areas.

| Item | Standard | Optional |
|------------------|--|---|
| Stainless Steel | Low-carbon type 304 | Type 316 |
| Interior Finish | #3 polish stainless steel | #7 (mirror) polish stainless steel, tile, Natatec® |
| Waterline Tile | | 4 x 4 waterline tile recess |
| Fittings | 2 inlet, 2 main drain, 4 hydrotherapy, 1 skimmer | Seat bubbler, counter swim jet, air jets, air seats |
| Edge Trim | | White, or color match, teak, Corian |
| Insulation | Minimal (shell only) | Polyurethane foam (pre-plumbed) |
| Seat Trim | | Tile, white or color match, teak, Corian |
| Handrail | | 1.09 x .65 stainless steel |
| Underwater Light | | Small, high intensity |