

"THE IDEA THAT ALL POOLS ARE CREATED EQUAL
JUST DOESN'T HOLD WATER."



NATATEC® PVC SWIMMING POOL LINING SYSTEMS

The system that has revolutionized how swimming
pools are constructed and renovated.

Natare Pools

5905 West 74th Street | Indianapolis, IN 46278 | USA
(800) 336-8828 | (317) 290-8828
natare.com • natare@natare.com



NATATEC® POOL LINING SYSTEMS

WHAT IS IT?

Natatec®, a multi-faceted and sophisticated installation technology system, comprises of a dense, high-quality, dual-layered PVC material that is specifically designed for commercial pool applications.

It consists of flexible layers of PVC laminated with a strong inner core of polyester mesh fabric. It is custom-fitted and bonded on-site to provide an attractive, easily maintained, completely watertight,

and indestructible pool surface. Since its introduction in 1986, Natatec has become the preferred method of constructing and renovating almost any type of commercial swimming pool and even some complicated residential projects.

The versatility and durability of the Natatec system can turn a swimming pool or aquatic recreation facility into a profitable, long-term investment.

FIX CHRONIC REPAIRS

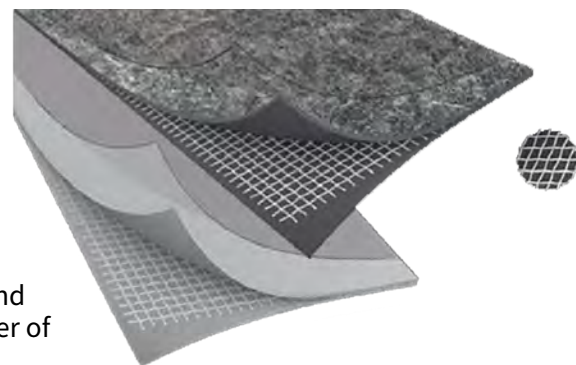
Stop resurfacing, re-plastering year after year.

TAKE CONTROL OVER LEAD TIME

Steps, benches, sun-ledges are made to fit on site.

GUARANTEED QUALITY AND DURABILITY

We guarantee the best watertight solution for both new pools and renovation with Natatec by RENOLIT, the world's largest producer of high-quality pool lining systems.



WHAT IT DOES

Because the pool walls or structure are used only for support, Natatec provides a means to renovate the worst pool foundations. Simple, cost-efficient support structures are adequate with our Natatec lining system. It provides an attractive, flexible watertight lining inside any supporting structure.

NATARE FACT: We introduced the concept of PVC pool linings for public and commercial pools in North America in 1986.

Natatec eliminates costly and time-consuming annual surface maintenance including repainting, replastering, sandblasting, and more. The reinforced pool lining system spans cracks, joints, and other defects with its tough, flexible blanket making it easy for us to quickly renovate your aging pool without having to rebuild the structure.

Never
paint, plaster,
fiberglass or
tile again!



Mid City Lofts
Atlanta, GA



Yale and Towne
Stamford, CT

YOUR COMPLETE WATERPROOFING SOLUTION

Get the ultimate in durability, performance and style with Natatec.

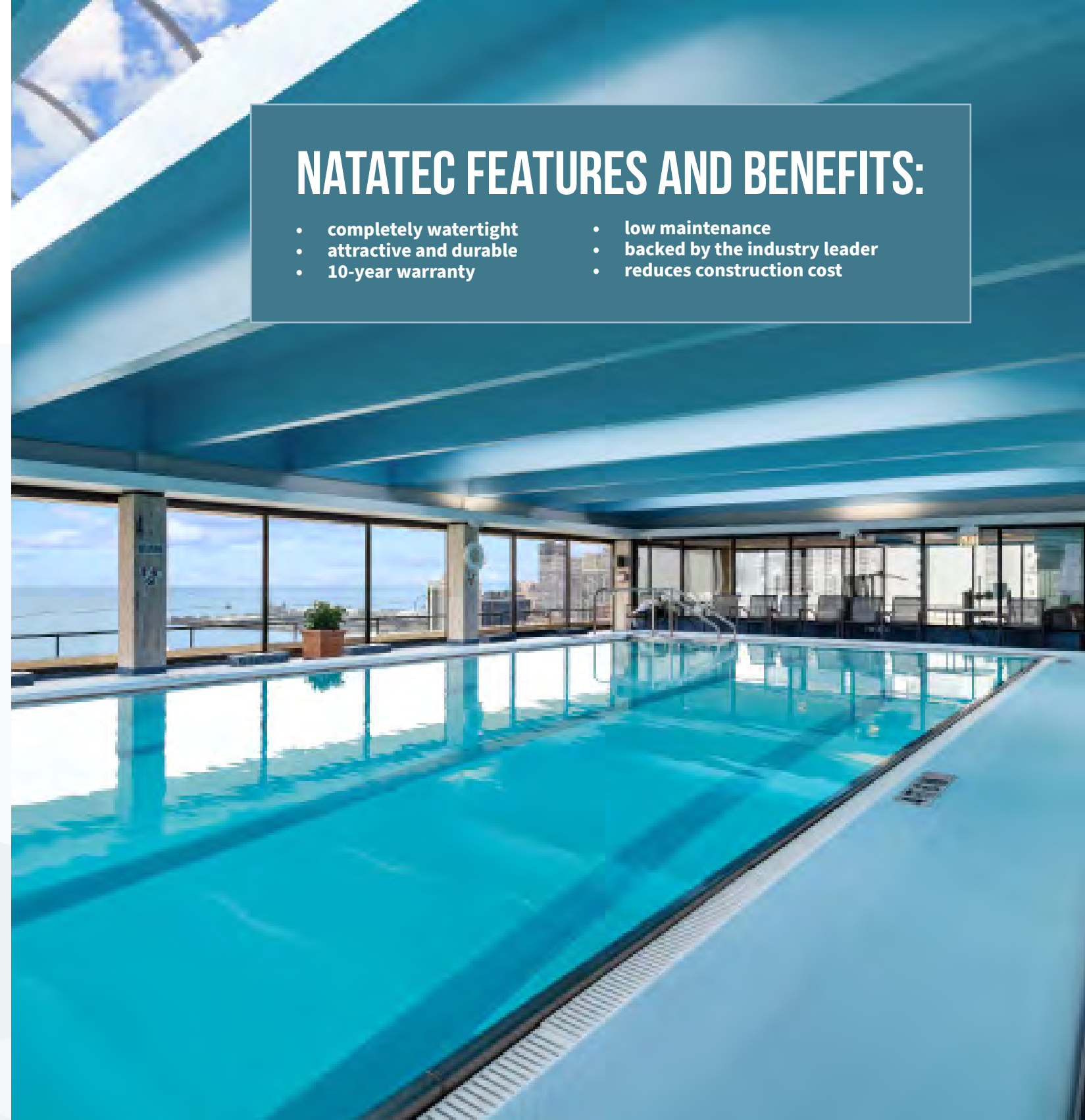
Choose from an assortment of colors, textures, and prints to create a pool or water feature that complements the surrounding environment. Thanks to our partnership with RENOLIT, the world's largest producer of high-quality pool lining systems, we can offer a variety of collections and colors.

LOOKING FOR AN ATTRACTIVE, DURABLE AND EASY INSTALLATION SOLUTION?

Our Natatec reinforced pool lining is a breakthrough in waterproofing. Using the most advanced polymer calendaring process in the industry, Natatec has developed a high-performance membrane reinforced by woven polyester strands.

NATATEC FEATURES AND BENEFITS:

- completely watertight
- attractive and durable
- 10-year warranty
- low maintenance
- backed by the industry leader
- reduces construction cost



No expensive
equipment
required



Quick
installation



No loud
construction
noise



Meets all
commercial
requirements



Suitable for
any pool type



Cost-effective
solution

Visit us online at:
www.natare.com



**NATARE
FACT:** Natare installed a pool lining system
at Area 51, the ultra-secret Air Force
base in Nevada.

 VISIT OUR WEBSITE FOR
DOWNLOADABLE
DOCUMENTS

FITS THE SHAPE

Our Natatec lining system can be made to fit any shape or size. Custom cut, fitted and fuse-bonded on-site, our system is tailored to each installation. Details such as stairs, inlets, drains, and overflow gutters are made permanently watertight. Lane markings, wall targets, depth markings, and even custom logos may be permanently applied using special PVC material. The end result is a beautiful pool for many years to come.



Houston Marriott Lazy River
Houston, TX



City of Globe Community Center Swimming Pool
Globe, AZ

LIKE NEW AGAIN

A one-piece, watertight, flexible lining within the pool shell, Natatec is perfectly suited to renovation applications.

Virtually any pool, no matter how old or deteriorated, may be successfully renovated with a PVC lining system. Moving expansion joints, cracks, spalling concrete, peeling paint and even structural movement are problems of the past with Natatec. Our system responds well to the problems commonly

associated with aluminum and other metal pools. Corrosion, pitting, staining, and coating failures are quickly forgotten. No matter what the structure, the Natatec system provides protection and extends pool life. Our impervious lining isolates the pool structure from damaging pool water.

NATARE FACT:
We installed our first Natatec® pool lining system over 35 years ago.



△ **City of Globe Community Center Swimming Pool**
Natatec has proved to be the best solution for saving the pool basin at the City of Globe Community Center Swimming Pool. A major renovation with the Natatec pool lining system, stainless steel pool gutters, a new filtration system, and moving bulkhead helped bring this pool back to life after a 10-year closure.



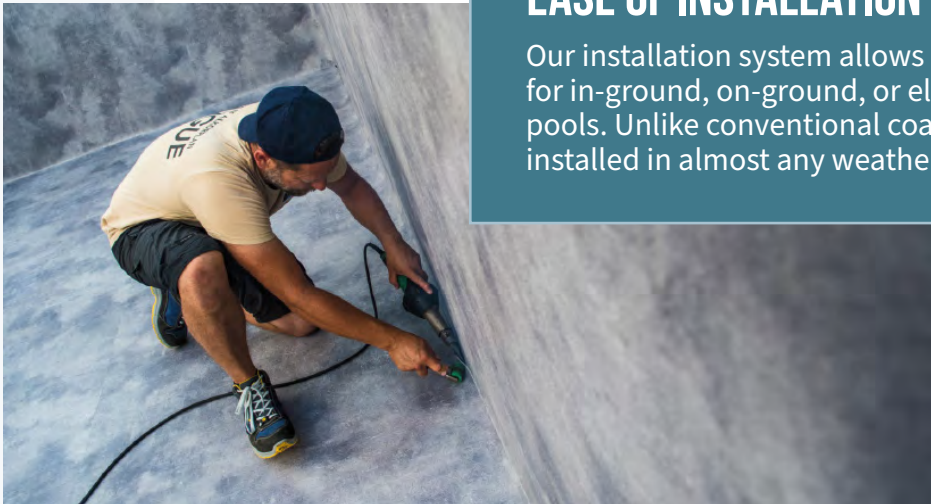
UNCOMPROMISED QUALITY

Reinforced Natatec Lining Systems: Limitless Applications

Proven in thousands of applications worldwide, Natatec lining systems have been making pools work for more than 30 years! From the Yukon to Fiji and practically everywhere in between, Natatec stand up to the rigors of commercial and public pool use—we guarantee it!

EASE OF INSTALLATION

Our installation system allows for a tailored fit for in-ground, on-ground, or elevated swimming pools. Unlike conventional coatings, Natatec can be installed in almost any weather.





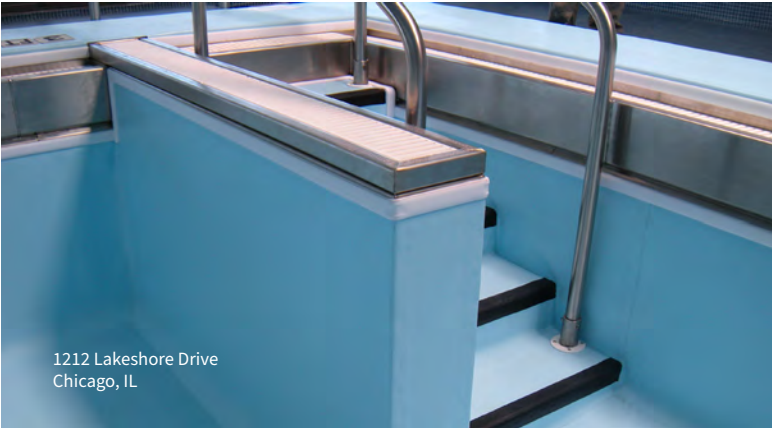
Hyatt Place Aruba Airport
Oranjestad, Aruba

Regardless of
your project's
requirements, our
commitment to
your satisfaction is
guaranteed.

A NAME YOU CAN TRUST

Natare's more than 30 years of product research, innovative design, and custom fabrication have given us the reputation of being a leader in the international aquatics marketplace.

From the design and construction of Olympic facilities and world-class natatoriums to specialized elevated pools, water parks, and fountains, Natare has provided state-of-the-art equipment and specialty construction systems to thousands of facilities.



1212 Lakeshore Drive
Chicago, IL

**NO PAINT TO PEEL,
FIBERGLASS TO
FAIL OR PLASTER TO
CRACK!**

Visit us online at:
www.natare.com

**NATARE
FACT:** We once covered an entire man-made mountain
in Orlando, Florida with our pool lining system
to ensure the mountain was waterproof.

CLEAN, SAFE AND SANITARY!

The non-porous surface of our liners helps prevent the growth of bacteria and algae and makes pool cleaning easy and inexpensive. With Natarec, the days of acid washing and other harsh chemicals to clean your pool are gone.

The surface of our Natarec lining systems does not alter water chemistry like plaster, grout, concrete, and other porous surfaces, providing ongoing savings in operational costs. By creating a watertight lining, Natarec reduces water lost through leakage and save energy and chemical use.



Freimann Square Fountain
Ft. Wayne, IN



VISIT OUR WEBSITE FOR
DOWNLOADABLE
DOCUMENTS

THE RIGHT CHOICE

If it absolutely has to be watertight or waterproof, Natatec pool lining systems offer cost-effective solutions. Technical excellence, specialized knowledge and years of critical experience are vital to the success of your specialty lining project. These capabilities are standard with each Natatec lining system.

Regardless of your project's requirements, our commitment to your satisfaction is guaranteed.

QEII
Christchurch, NZ

**NATARE
FACT:** We have been involved
in more than 10,000 pool
projects



FIBERGLASS POOL REPAIR

Natatec is the solution for repairing fiberglass failure in swimming pools. Fiberglass pool coatings are notorious for cracking and removing failing fiberglass material in pools can be expensive. For a fraction of the cost, Natatec can be installed directly over the existing fiberglass surface to create a new worry-free surface. The pool lining material is cut-to-fit and welded on-site to ensure a pool coating that is completely watertight, attractive and long-lasting.

HOW NATATEC LINING SYSTEMS COMPARE

Adverse Condition	Concrete/Plaster Cementitious Coatings	Paint	Fiberglass Coatings	Ceramic Tile	Natatec
Cracking	Almost always re-cracks	Always re-cracks delaminates	Almost always cracks or peels	Will crack and delaminate	Will never crack
Black Algae	Will grow back through	Will grow back through	Will support algae growth	Will support algae growth	Will not grow through or support algae growth
Acid Resistance	Can be acid washed	Unknown	Subject to chemical deterioration	Low; grout joints attacked	Does not need acid washing
Pool Chemical Usage	Contributes to alkalinity of water; encourages and supports algae growth	Less than plaster	Less than plaster	Encourages and supports algae growth	Reduces chemical requirements
Water-tightness	Will crack; not watertight	Will leak; no effect on watertightness	Will delaminate and leak in time	May leak; crack and delaminate	A watertight impervious lining
General Chemical Resistance	Very poor	No protection	Will deteriorate	Grout joints will deteriorate	Not affected by normal pool treatment levels
Expected Life	3 - 5 years	1 - 3 years	3 - 5 years	5 - 10 years	15+ years

Natatec is the system that revolutionized the renovation and construction of swimming pools and water features.

NATATEC LINING SYSTEMS ARE NOT ONLY FOR POOLS

Specialty Natatec lining systems can add years of continuous service to fountains, storage tanks, reflecting pools or any other special application where containment or absolute waterproofing is required.

We offer perfect, custom engineered solutions. Using much of the technology developed for our swimming pool systems, Natatec containment lining systems have applications ranging from simple pond liners to custom industrial tank linings, specialty waterproofing and isolation liners. Our lining systems makes it tight. Whether it's a water feature lining in the lobby of a luxury hotel or a watertight barrier beneath a structure, we have the material and methods to do it right.



Natatec containment linings are designed for containment in environmental, industrial, agricultural, and specialty waterproofing systems. It is compliant with ASTM, ANSI, EU, CN, military and regulatory standards, and international requirements and provide the peace of mind of knowing that fluids cannot and will not leak out (or leak in!).

APPLICATIONS FOR CONTAINMENT LINING:

- drinking water storage
- industrial tank linings
- secondary oil containment
- decorative ponds
- recreational aquascapes
- fountains and water features



Visit us online at:
www.natare.com



Leak-proof, durable, and low-maintenance, our pool systems are the proven solution.

COST EFFECTIVE

Natatec lining systems from Natare make sense. Our systems lower maintenance and operating costs.

Natatec completely eliminates periodic painting, patching, and other pool coating maintenance. Its poreless surface and antimicrobial treatment makes it a breeze to clean, and the watertight design aids in reducing chemical consumption and heating costs.



Our slip-resistant material provides one of the most sure-footed surfaces available for pool use. Zero depth areas, wading pools, steps, gutters, aquatic playgrounds and other wet areas where added security is required are ideal areas to put our slip-resistant surface to the test.



Since we first introduced reinforced PVC membrane systems to North America in 1986, it has become the preferred method of constructing and renovating almost any type of commercial swimming pool.

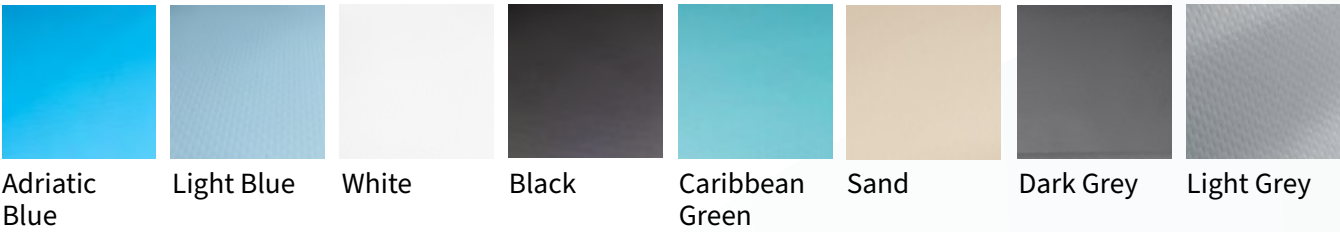


CONTACT US TODAY TO SEE
HOW WE CAN BUILD YOUR
PROJECT ON BUDGET

FOUR DIVERSE COLLECTIONS OF COLORS & TEXTURES

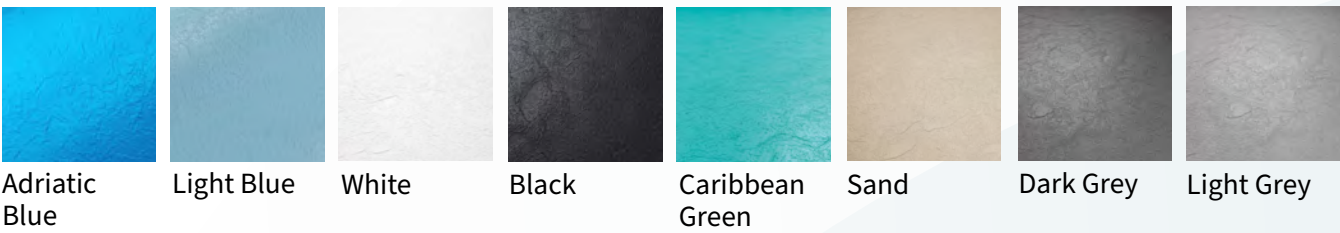
NATATEC 2000 | SMOOTH | SOLID COLOR

It is a 60 mil reinforced PVC membrane system that is perfect for the renovation or new construction of commercial, municipal, institutional, and recreational swimming pools.



NATATEC RELIEF | TEXTURED | SOLID COLOR

It is a 70 mil reinforced PVC membrane system that features a textured, slip-resistant material that is soft to the touch, but rigid enough to help prevent unfortunate slips and falls within the pool.



NATATEC TOUCH | TEXTURED | STONE DESIGNS

It is an 80 mil reinforced PVC membrane system that is inspired by nature and natural stones. The 3D-printed designs give any pool the elegant look of marble, slate, stone, or sand at a more cost-effective price.



NATATEC VOGUE | TEXTURED | MODERN DESIGNS

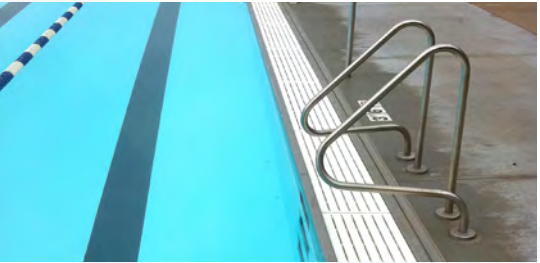
It is an 80 mil reinforced PVC membrane system that is inspired by the latest interior design trends. The textured designs bring the interior of a home or commercial entity outdoors for a refined, modern, and aesthetically pleasing finish to your pool.



OTHER NATARE PRODUCTS AND SYSTEMS

Perimeter Gutter Systems

Integral perimeter recirculating systems or overflow channel return systems provide the ultimate pool surround. Available in deck-level, semi-recessed, or fully recessed configurations in single channel, double channel, and positive suction return.

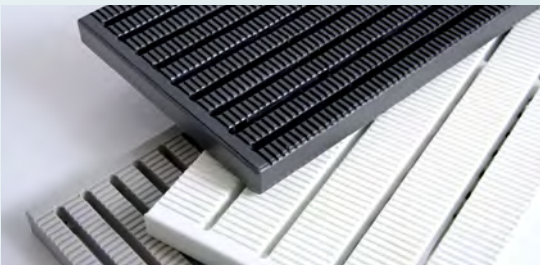


Natatec® SOLID Decking Surface Solution

A reinforced PVC membrane that encapsulates and makes the deck area slip-resistant and waterproof. This is an ideal solution for decks experiencing cracking, flaking, delamination, and peeling.

Natare Fixed and Movable Bulkheads

The answer to multipurpose, functional pool systems, Natare pool bulkheads are world renowned for the perfect competition systems. Vertically deployed or laterally moved, Natare bulkheads are available for any pool configuration.



Grating Systems

Exclusive GPM polymer grating systems for pool surrounds, overflow systems or any pool, spa, or recreational environment. The first certified slip-resistant grating with a 10-year full replacement warranty.

MicroFlo® Filtration

High-capacity stainless steel vacuum sand and pressure filters in vertical or horizontal configurations. Available in sizes suitable for even the largest swimming pools, spas or water features; we sell the most economical, durable, and highest purity filtration available. An entire pool recirculation, filtration, and control system ready for fast, easy, and economical pool or water feature construction.



Never sandblast, plaster, patch, caulk, paint, or recoat your pool surface ever again! Contact Natare for more information about how Natatec can help with your next aquatic project.



Natare Pools

5905 West 74th Street | Indianapolis, IN 46278 | USA

(800) 336-8828 | (317) 290-8828

www.natare.com • natare@natare.com

Natare, the stylized N, MicroFlo and Natatec are trademarks of the Natare Corporation.

© Copyright 1997-2025 Natare Corporation. All rights reserved.