

# MOVING BULKHEADS

The world's finest bulkhead systems for competition, recreational and leisure aquatic facilities.



"THE IDEA THAT ALL POOLS ARE CREATED EQUAL JUST DOESN'T HOLD WATER."

Natare  
Corporation







# NATARE BULKHEADS

For recreation, instruction or competition, the need to provide a facility that can accommodate multiple programming activities is crucial. Natare bulkheads span the width of a swimming pool, creating a movable bridge to divide a larger single activity pool into a multiple activity pool. Easily moved, Natare bulkheads can be repositioned to accommodate both imperial or metric competition courses, or used to host two aquatic events simultaneously such as scuba diving lessons and water aerobics.

Natare bulkheads are rigid and stable, complying with all current FINA, USA Swimming and NCAA requirements. Utilizing a box truss construction, horizontal and vertical deflection is minimized making bulkheads capable of supporting in excess of 100 pounds per square foot (7.18 kPa).

The top and sides of the bulkhead are covered with an ASTM certified slip-resistant GPM grating that dissipates wave rebound for competitive swimming, maintains proper water circulation and provides a safe and secure walking and turning surface.

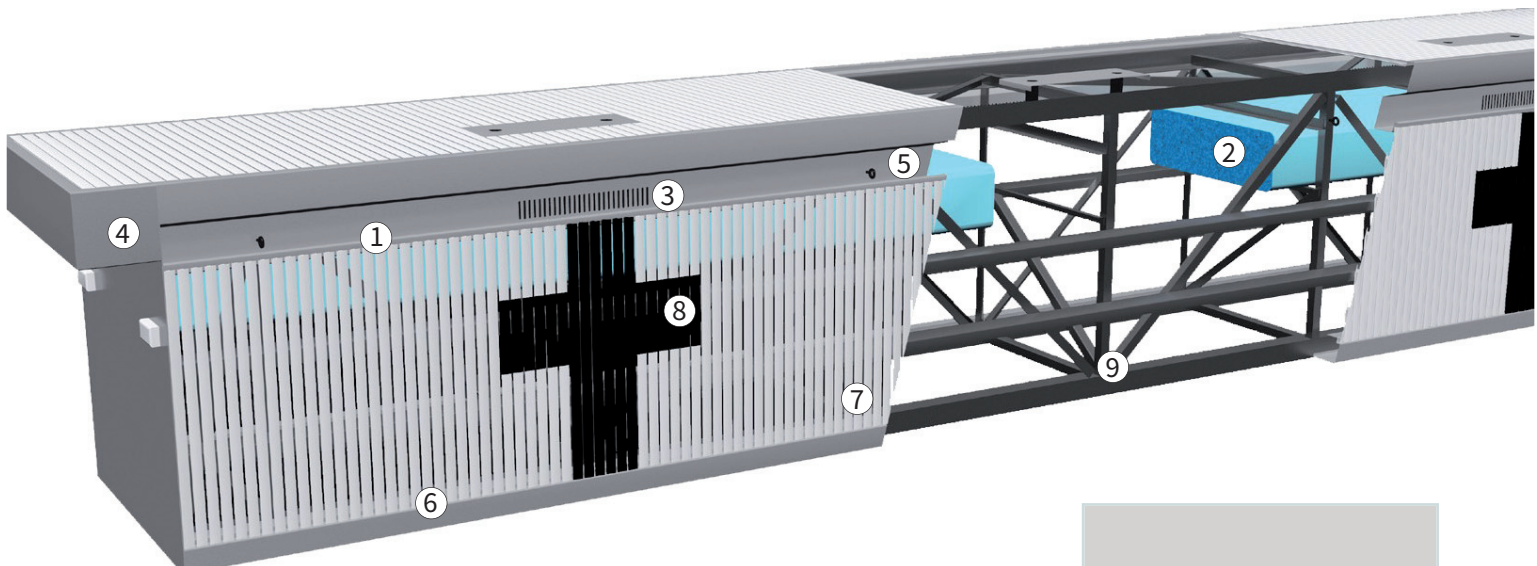
Natare manufactures the largest and most technologically advanced bulkheads in the world. Our experience has been proven in international competition as well as college, high school and recreational facilities.





## Natare Bulkhead Advantages:

- **One Piece Self-Supporting Stainless Steel Construction**  
This minimizes horizontal and vertical deflection without added bracing.
- **Complete Flow-Through for Wave Absorption**  
This prevents waves from rebounding and interfering with competitive swimming.
- **Easily Moved to New Positions**  
Bulkheads are easily moved to change pools from yards to meters or to divide pools into different activity areas.
- **GPM Grating**  
ASTM certified slip-resistant unbreakable grating is used to provide a safe and secure walking and turning surface.
- **X-Ray Structural Certification**  
(Optional) All welds are x-rayed to guarantee strength and quality of welds.
- **Variable Buoyancy**  
Lessens effective bulkhead weight during movement allowing easier repositioning.
- **Cost Effective**  
Natare bulkheads eliminate the need for building additional pools and provide new flexibility to existing facilities.
- **“Hybrid” Construction**  
Optional “Hybrid” construction featuring totally non-corrosive polymer construction above water line.



## Bulkhead Features:

- ① Recessed hand hold.
- ② Buoyancy chambers reduce the effective weight in water.
- ③ Flow-through wave quelling openings at the water's surface.
- ④ The carriage assembly provides support and allows access to the locking mechanisms, movement controls and buoyancy flotation system.
- ⑤ Rope hooks and anchors are recessed into the bulkhead to reduce the danger of injury to swimmers.
- ⑥ Stainless steel profiles cover all bulkhead edges.
- ⑦ The permanent white color of the ASTM certified slip-resistant GPM grating will not wear off, yellow or delaminate. No recoating or painting is necessary.
- ⑧ Slip-resistant lane targets.
- ⑨ Stainless steel truss sections.

### Bulkhead Strength

The superior strength and rigidity of the Bulkhead comes from its all stainless steel dyadic truss frame. Bulkheads are designed for the requirements of world-class swimming facilities around the world.



# QUALITY YOU CAN TRUST

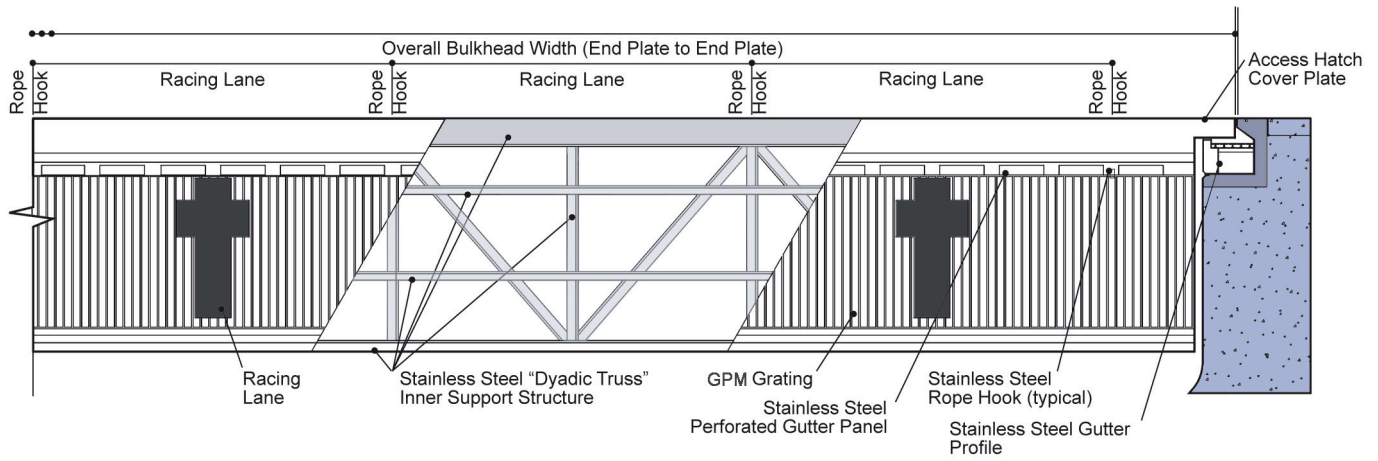
**When you specify and purchase a Natare bulkhead, you get a complete bulkhead system,** backed by a team of professionals who know swimming and aquatics. Natare understands the needs and requirements of multipurpose aquatic facilities and provides bulkhead solutions that are designed right, work right and are delivered on-time and on-budget.

Natare provides a ten (10) year Manufacturers Warranty against defects in materials or workmanship for all components of the bulkheads. The stainless steel truss will be warranted for a period of fifteen (15) years. These warranties will include parts, labor and materials to repair or replace any defective items during the term of the warranty.

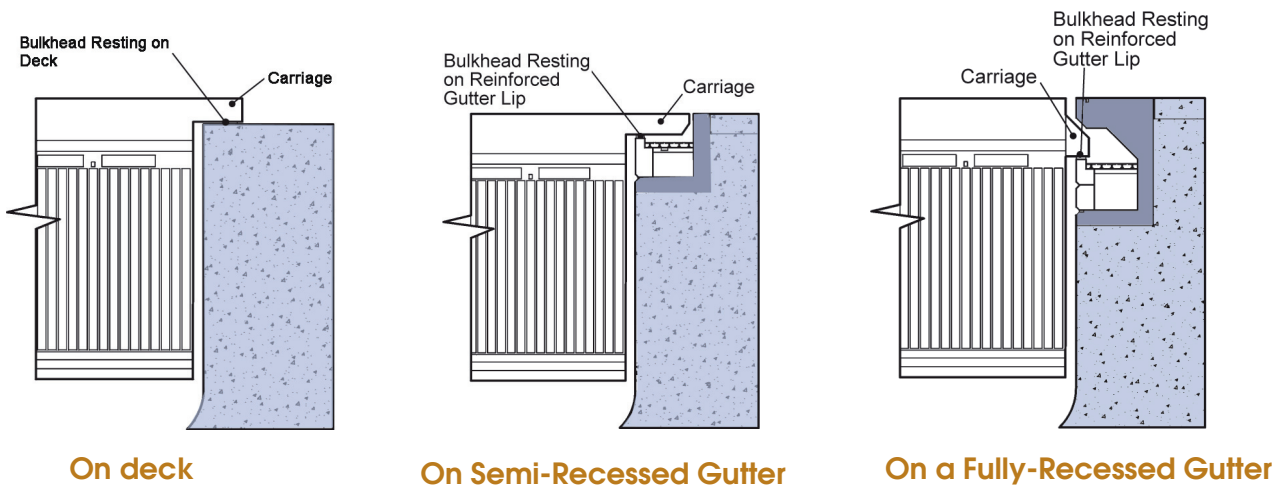
Natare bulkheads are rigid and stable, complying with all current FINA, USA Swimming and NCAA requirements.



## Typical Partial Bulkhead Elevation



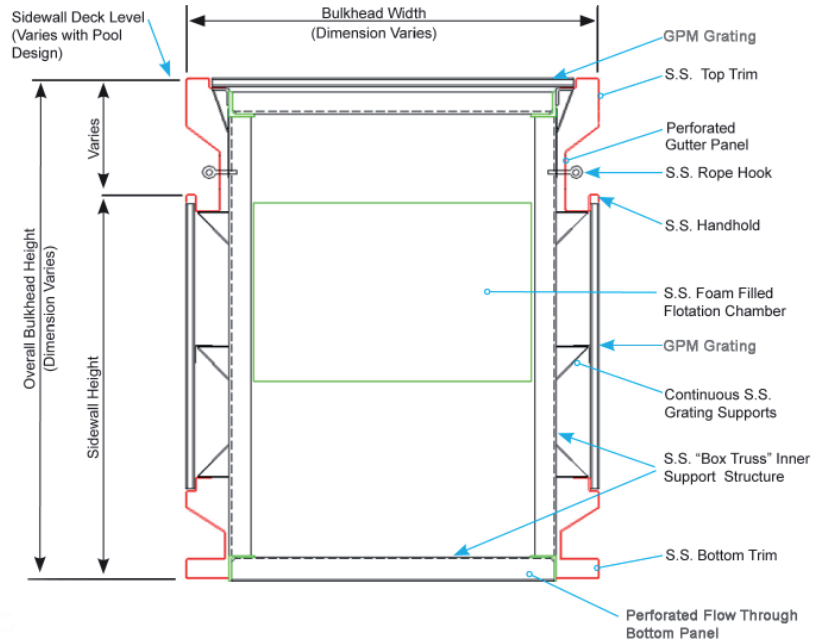
## Typical Bulkhead and Perimeter Configurations



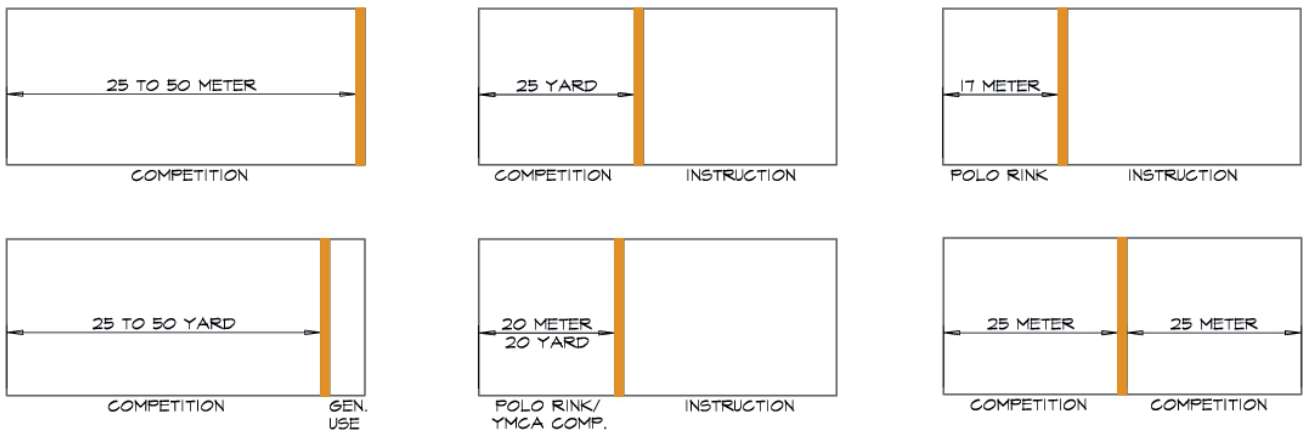


# MOVING BULKHEADS

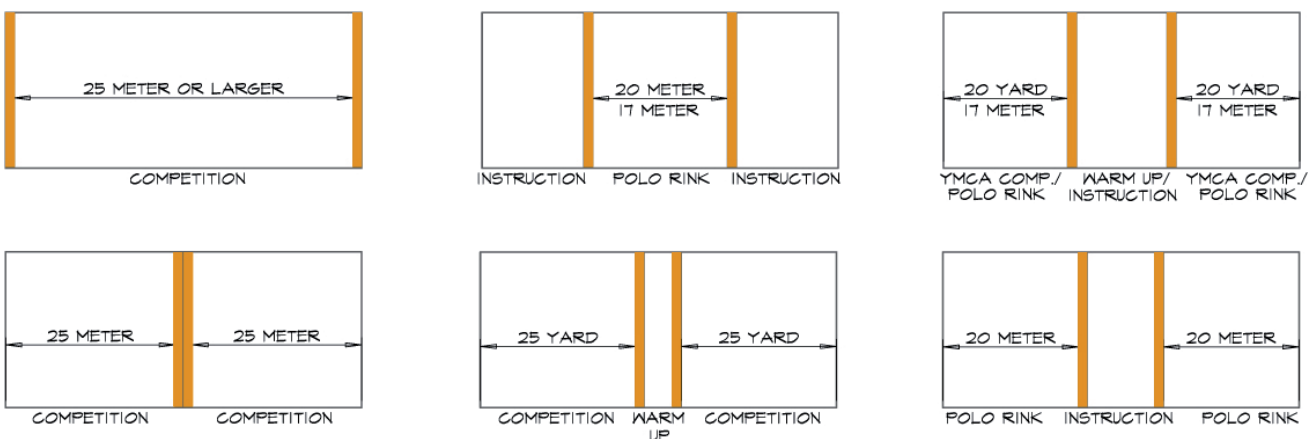
How do you instantly change a swimming pool from yards to meters, from water polo to water ballet, or divide a large pool for simultaneous water aerobics and scuba diving classes? The answer is a movable swimming pool bulkhead. Essentially, movable pool walls that may be safely locked in place or easily moved to any position in the pool, bulkheads allow a variety of regulated competition courses by easily changing lane length. They also serve as activity dividers, stations for competition officials and a multitude of other functions.



## Typical Locations of a Single Movable Bulkhead

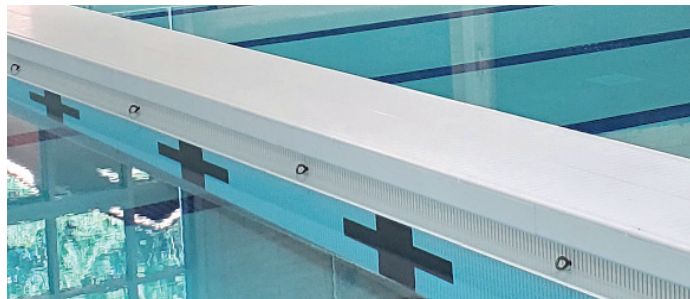


## Typical Locations of Double Movable Bulkheads





# HYBRID BULKHEAD



Natare Hybrid Bulkheads are constructed of the same materials as our stainless steel pool bulkheads. The difference is the exterior trim above the water level is made from our GPM polymer material.

Fabricated in-house at our Indianapolis manufacturing facility, the GPM material allows us to produce typical shapes or custom shapes based on a project's requirements instead of being limited to one or two profiles. With the unique design of the hybrid trim system, the GPM material offers additional options of engraving text, inlaying target panels, adding custom logos, and can be produced in a variety of colors.



## BENEFITS:

- durable, long-lasting, and almost maintenance-free
- ideal for renovation or new construction
- Stain resistant and will not damage from typical pool chemicals
- Available in multiple colors for custom applications
- Customizable with engravable text, logos
- Constructed from premium materials



Natare Moving Bulkheads are custom designed and configured to meet the needs of your program and facility. Each Bulkhead is unique and handcrafted for your pool. Budget estimates, conceptual details and a range of services are available to assist you in selecting your Natare Moving Bulkhead. Can we build one for you?



## Natare Corporation

5905 West 74th Street | Indianapolis, IN 46278 | USA  
(800) 336-8828 | (317) 290-8828 | FAX (317) 290-9998

[www.natare.com](http://www.natare.com) • [natare@natare.com](mailto:natare@natare.com)

v44532