

“THE IDEA THAT ALL POOLS ARE CREATED EQUAL  
JUST DOESN'T HOLD WATER.”



a précis for pools

# EQUIPMENT AND SYSTEMS FOR POOLS, AQUATIC FACILITIES AND WATER FEATURES



**Natare Pools**

5905 West 74th Street | Indianapolis, IN 46278 | USA  
(800) 336-8828 | (317) 290-8828  
natare.com • natare@natare.com



FIND OUT MORE ABOUT THE PROJECT PICTURED BELOW ON OUR WEBSITE.



Natare equipment and systems mean a highly durable, well-engineered and cost-effective pool construction and renovation. For detailed information on any of our products or construction systems and expert technical advice for their selection, specification and installation, talk to Natare for advice tailored to your individual project.

# “TO SWIM”

Natare is the Latin verb meaning “to swim,” and everything we do is committed to this purpose.

## TABLE OF CONTENTS

- Introduction ..... 3
- Who We Are ..... 4 - 5
- Natare’s History ..... 6 - 7
- Systems and Equipment
  - Natare® Pool Systems ..... 8 - 9
  - AWS Pools and SPS Pools ..... 10 - 11
  - Elevated and Rooftop Pools ..... 12 - 13
  - Competition and Training Pools..... 14 - 15
  - Specialty Pools ..... 16 - 17
  - Hydrotherapy Spas and Pools ..... 18 - 19
  - Perimeter Gutter Systems ..... 20 - 21
  - Bulkheads ..... 22 - 23
  - MicroFlo® Filtration Systems ..... 24 - 25
  - Natatec® Pool Lining Systems ..... 26 - 27
  - GPM Grating “GPM” ..... 28 - 29
  - Underwater Windows ..... 30
  - Spargers ..... 31
  - Natatec® SOLID and SafeStep ..... 32
  - NataClear™ Acrylic Panels ..... 33
- Aquatic Accessories ..... 34 - 35



Questions? Contact us today at [natare@natare.com](mailto:natare@natare.com)

Visit us online at: [www.natare.com](http://www.natare.com)



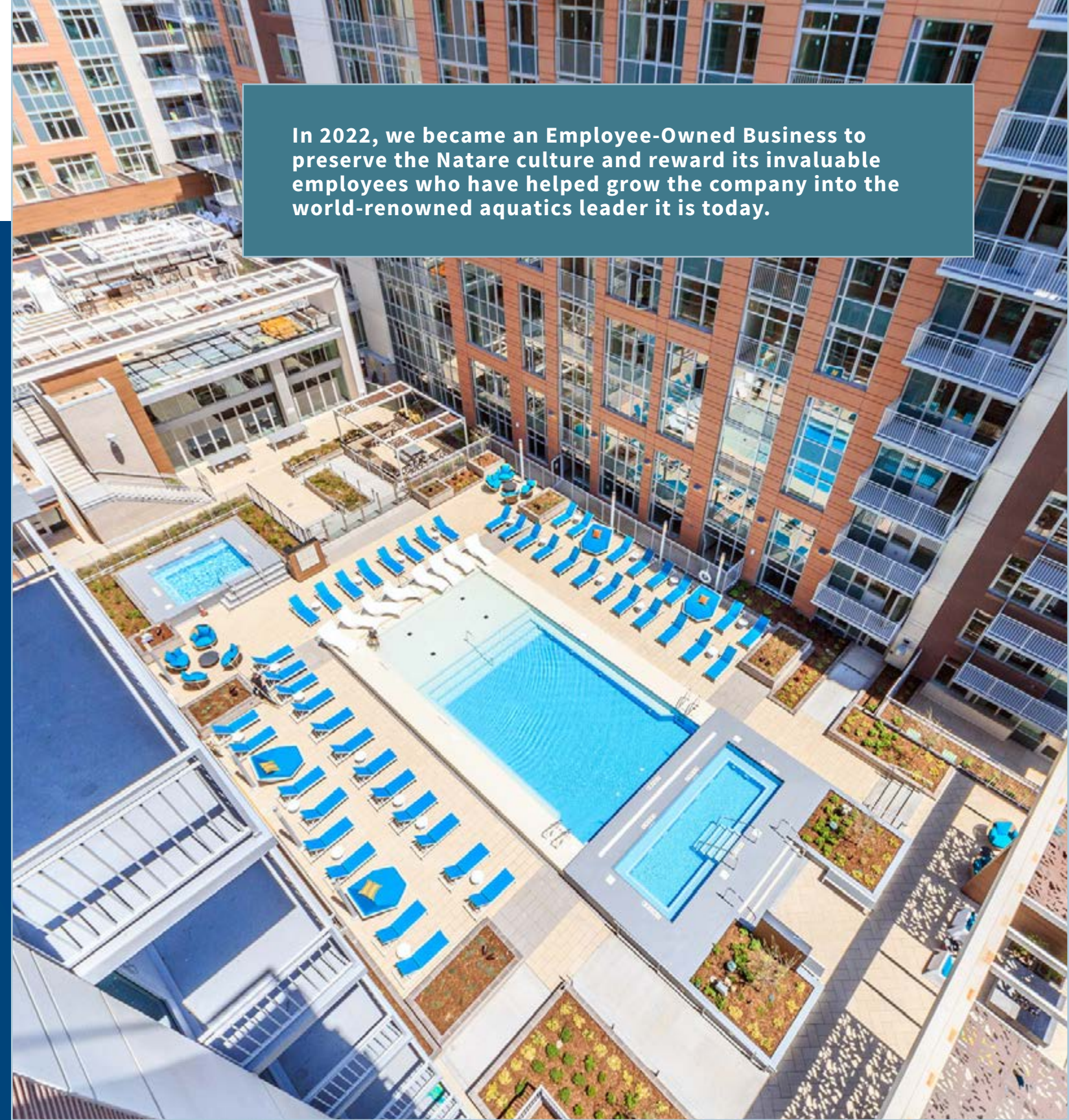
VISIT OUR WEBSITE FOR DOWNLOADABLE DOCUMENTS



FOR MORE INFORMATION USE THE QR CODES LOCATED ON EACH PRODUCT PAGE



CONTACT US TODAY TO SEE HOW WE CAN BUILD YOUR PROJECT ON BUDGET



In 2022, we became an Employee-Owned Business to preserve the Natare culture and reward its invaluable employees who have helped grow the company into the world-renowned aquatics leader it is today.

## WHO ARE WE

Natare Corporation is one of the world’s most respected stainless steel pool manufacturers and suppliers of custom equipment for commercial swimming pools, water parks and aquatic centers, and high-end residential pools.

Located in Indianapolis, Indiana, our facility houses administration, engineering, production, warehousing, manufacturing, operations, and testing in one single location. We offer a broad selection of top-quality equipment and systems, in combination

with comprehensive consulting, engineering, and technical services. Direct field representation is provided throughout the United States and in many countries around the world, including Canada, New Zealand, and Europe.

## OUR HISTORY



Since 1969, we have been the leader in designing, manufacturing, and supplying top-quality systems for the successful construction, operation, and renovation of aquatic facilities around the world. When the first true international natatorium facilities appeared in the 1970s and 1980s, our concepts, equipment, and systems set the standard for swimming pool and aquatic facility construction.

# GOALS

**1 SATISFACTION: ON-TIME AND ON-BUDGET**  
With a strong management team and years of experience in all phases of pools, spas, and aquatics, you can count on Natare to guide your project from conception all the way to completion.

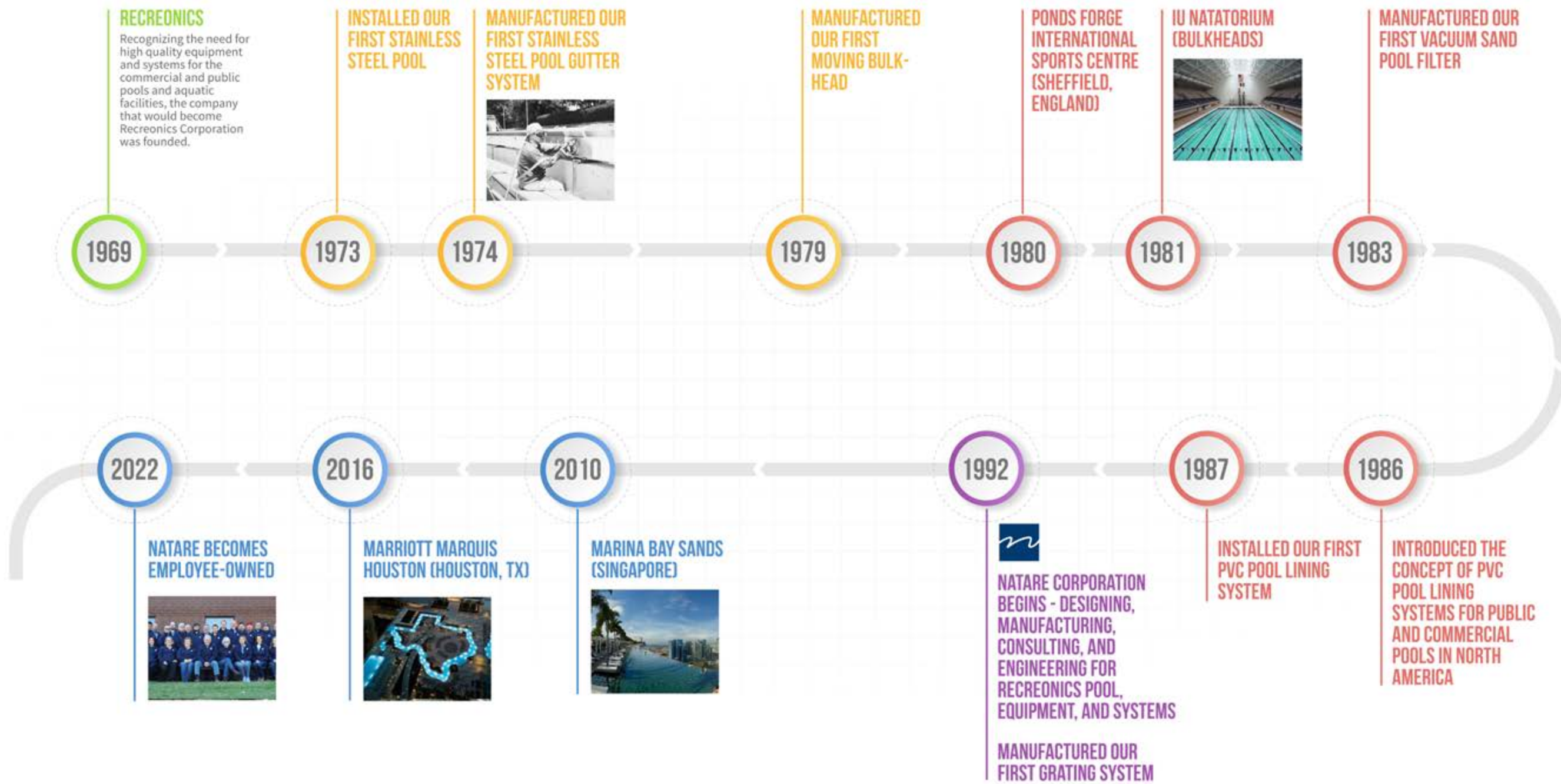
**2 EXCEPTIONAL PRODUCTS**  
Throughout the years, we have developed the most complete selection of specialty equipment and systems available.

**3 PRECISION DESIGN**  
Each of our stainless steel pools and spas are individually engineered and structurally designed using the most comprehensive computer design and modeling tools.

**4 TOP-QUALITY SERVICES**  
As a highly recognized leader in the aquatics industry for over 50 years, Natare has acquired the proper knowledge and perspective to provide comprehensive assistance for new construction and renovation.

# NATARE'S HISTORY

Questions?  
Contact us today at:  
natare@natare.com



The heritage of Natare dates to the late 1950s and 1960s. Back in the time when amateur swimming and powerful university swimming programs in Indiana produced some of the most outstanding competitive swimmers and teams in the nation. At the same time, the first leisure pools and water parks were beginning to appear, including the very first wave pool, forever changing the concept of swimming, aquatic recreation, and water features.

Today, Natare products and systems meet the needs of today's most innovative aquatic facilities including international competition venues, educational and institutional pools, health, fitness and medical rehabilitation facilities, and exciting leisure and recreational pools.



**WANT TO KNOW MORE ABOUT NATARE?  
VISIT OUR WEBSITE [WWW.NATARE.COM](http://WWW.NATARE.COM).**

“The idea that all pools are created equal just doesn’t hold water.”

**NATARE FACT:** Our pools and equipment can be found in over 43 countries.



Leakproof, durable and low maintenance, our pool systems are the proven solution for design, construction and renovation.

# NATARE POOL SYSTEMS

Our pools are complete stainless steel structures, pre-engineered to the exact project requirements for a simple and precise installation.

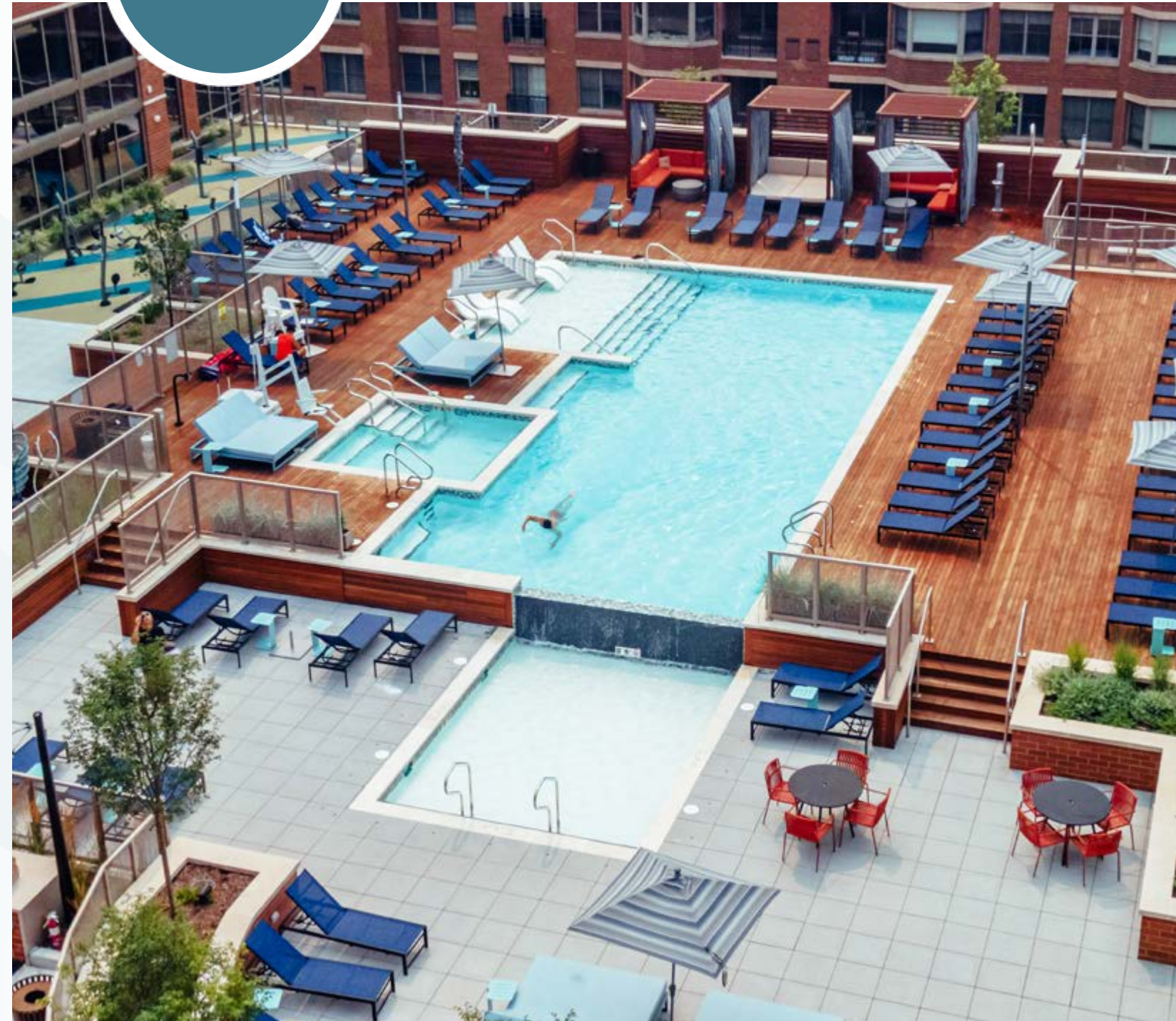
Natare pools are complete pre-engineered solutions for the construction and renovation of virtually any swimming pool, water feature, or aquatic environment. A proven system, Natare pools incorporate stainless steel construction in combination with a variety of options that eliminate typical pool problems created by the use of concrete construction methods.

Our modular pools are available in two different pool construction systems that are tailored to your project's requirements for fast, cost-efficient construction and installation.



Hawks Bay Aquatic Center  
Hawks Bay, NZ

**100%** COMMITTED TO YOUR SATISFACTION



Natare pools are built to NCAA, USA Swimming, YMCA, NFHS and World Aquatics (formerly FINA) standards, and are certified to all levels of national and international competition.

Visit us online at:  
[www.natare.com](http://www.natare.com)



# TWO GREAT CHOICES...

We offer many styles to fit your project requirements and budget, including a full range of interior finish options including polished stainless steel, Natatec pool lining system, ceramic tile or natural stone.



## ALL-WELDED POOLS | AWS

1

Natare All-Welded Pool Systems (AWS) are quickly assembled on-site or, for smaller pool configurations, in our manufacturing plant as a single piece or component system. Each section is then joined together on-site with minimal welds to provide a fast and easy installation.

AWS is a permanent, watertight system that works with a variety of different floor systems including our Natatec® pool lining system. Your pool project can have the luxurious curves and sinuous shape of a lazy river while still achieving the strength and stability that only All-Welded Stainless Steel Pool Systems can provide. Interior finishes include polished stainless

steel, ceramic tile, and Natatec. Other special finishes are available upon request.

Natare AWS pools are ideal for in-ground, on-ground, or elevated aquatic construction and feature sectional design tailored to the exact configuration of each individual project.

## STRUCTURAL PANEL POOLS | SPS

2

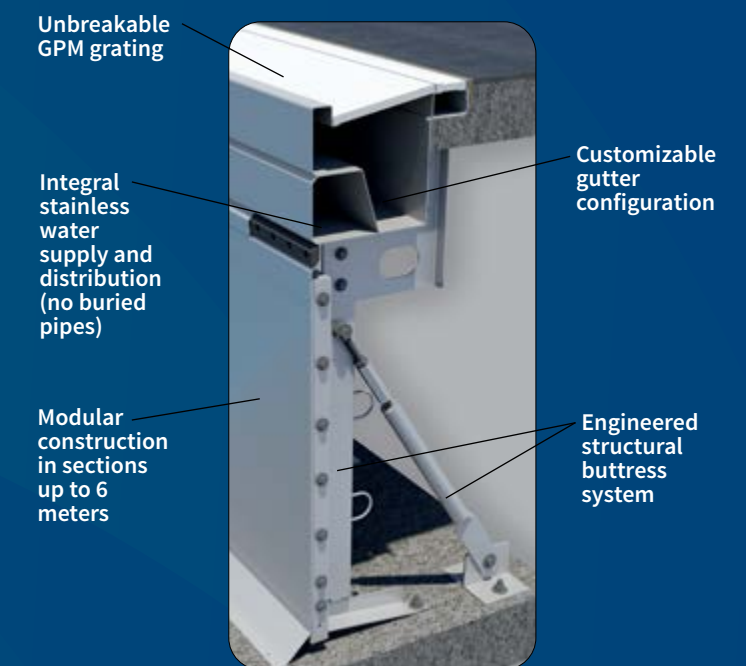
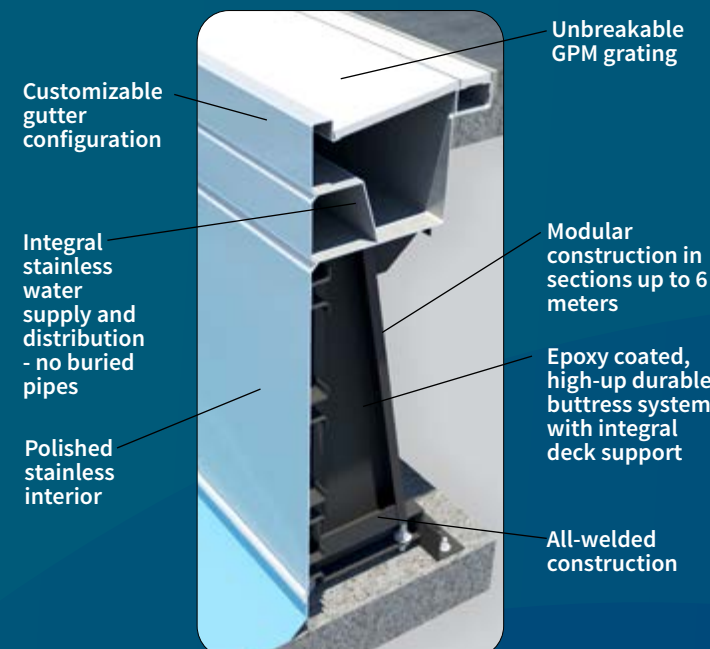
Natare Structural Panel System (SPS) is a bolted panelized pool construction system using 12-gauge stainless steel and a fully-welded gutter system. It is available in a wide range of shapes, sizes, and configurations and can be constructed anywhere in the world.

Structural Panel System pools include a robust stainless panel with a strong structural buttress system that can be easily adjusted during installation. It is primarily used for in-ground installation and is shipped as a kit to be assembled entirely on-site. It is also the perfect solution for one-off events where a temporary pool is needed and can be relocated to a new facility.

custom configurations, Natare pools typically feature an all-welded integral circulating perimeter gutter. The perimeter pool piping or fragile plastic inlets are eliminated, and the automatic surge control weirs eliminate balance or surge tanks.

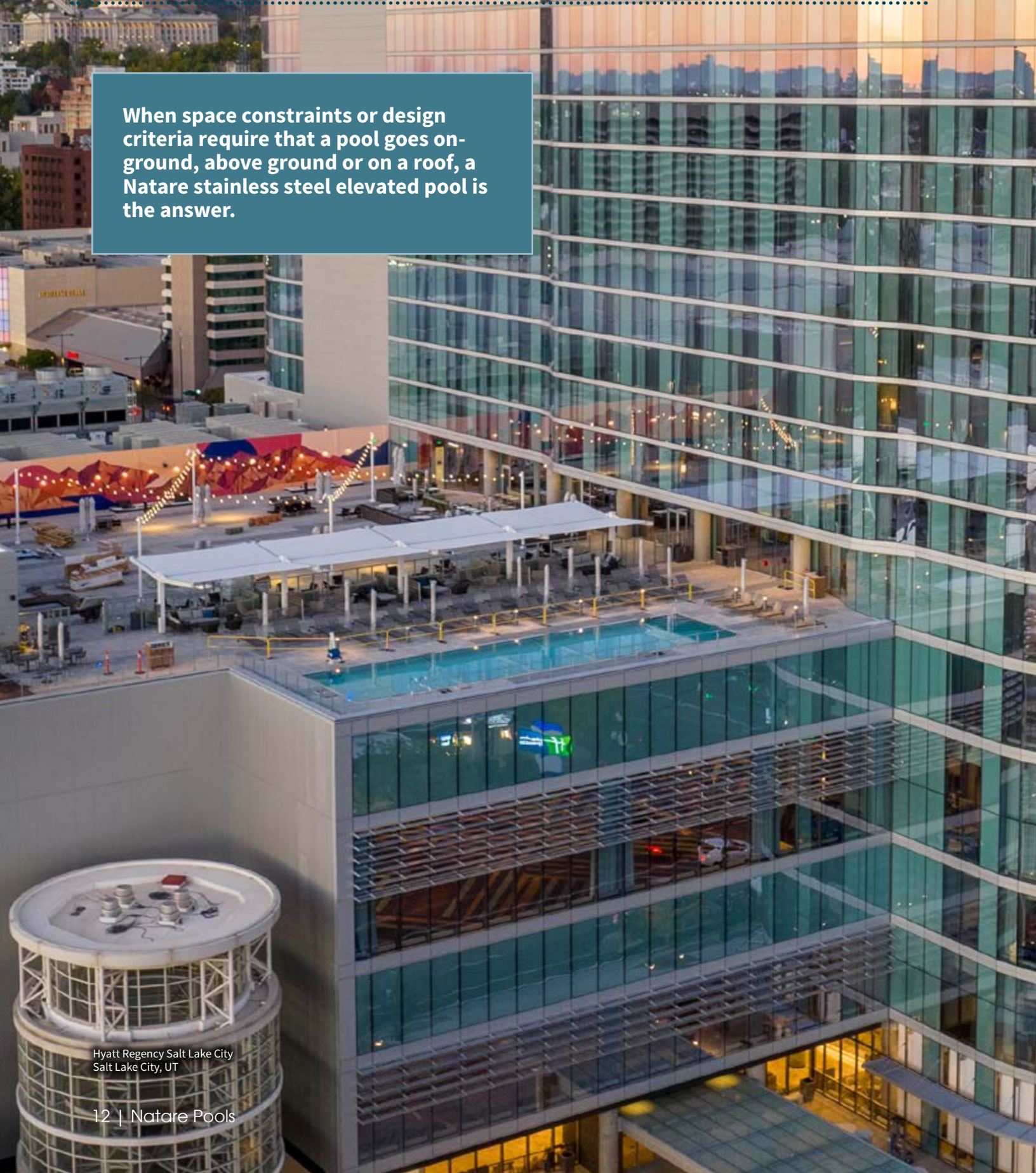
Dependent upon your pool's requirements, you can choose from a range of interior finishes including Natatec® pool lining system, ceramic tile, or polished stainless steel.

Available in a variety of shapes, sizes, and standard or



**NATARE FACT:** Our average pool project uses over 7,000 pounds of stainless steel.

When space constraints or design criteria require that a pool goes on-ground, above ground or on a roof, a Natare stainless steel elevated pool is the answer.



Hyatt Regency Salt Lake City  
Salt Lake City, UT



# ELEVATED AND ROOFTOP POOLS



E'Laan Apartments  
Indianapolis, IN



Marina Bay Sands  
Singapore

**Elevated Natare pools feature all-weather construction that moves with the building and butress systems that could support the pool decking.**

Moving the pool to the roof offers an open feeling while not taking up precious space on the ground. This option is also a great solution for environments with poor soil conditions or high water content.

A Natare pool can be designed to fit any space available to create a unique atmosphere with a variety of depth changes, seating, stairs, spas within the pool and much more.

Is your construction time frame tight? We can ship your elevated Natare pool in one piece, multiple segments or construct it on-site.

Natare elevated and rooftop pools save time and money during the construction and installation phase, and significantly reduce structural loading while providing an absolutely watertight pool.



**CONTACT US AT [NATARE@NATARE.COM](mailto:NATARE@NATARE.COM) OR VISIT OUR WEBSITE AT [NATARE.COM](http://NATARE.COM)**

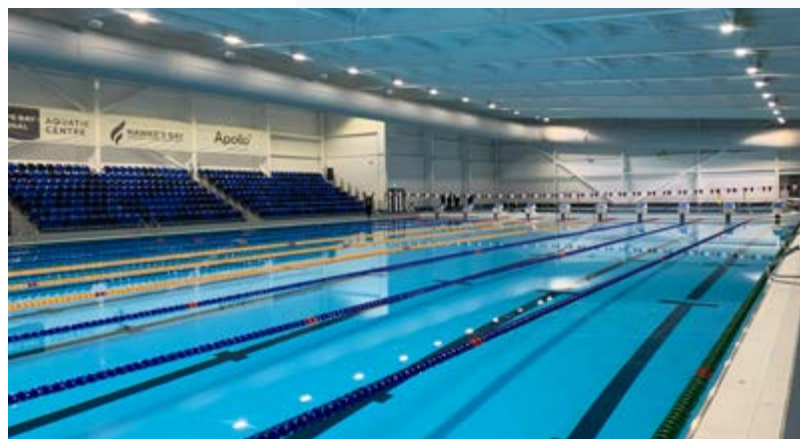
# COMPETITION AND TRAINING POOLS

Competition pools include the standard 25-yard, 25-meter and 50-meter pools in configurations suitable for all levels of competition and training. Our industry-standard stainless steel pools last through decades of high activity with little to no maintenance.

Natare pools are available in all-welded and structural panel systems. They offer the same great benefits of pre-engineered construction to form a watertight, maintenance-free swimming pool for new construction or renovation. Both systems are durable, offer quick installation and can be customized to your project needs. A Natare pool makes your swimmers fast and recreational users happy.

Our pools offer more record-breaking opportunities because they are the perfect competition environment. A Natare pool, quite simply, is a fast pool, tailored for competitive swimming and training, and certified to all current USA Swimming, World Aquatics (formerly FINA), NCAA, YMCA and NFHS standards.

Natare pools eliminate the waves and surge that can slow swimmers down. Our gutters and bulkheads, finished with Natare GPM grating, create a fast pool environment ideal for training and competition.



Hawke's Bay Regional Aquatic Centre  
Hawke's Bay, NZ

**NATARE FACT:** Since 1969 we have completed over 7,500 projects around the world.



Visit us online at:  
[www.natare.com](http://www.natare.com)

**Natare pools provide the fast and functional pool environment essential for training and competition.**

- state-of-the-art perimeter recirculation systems (pool gutters) eliminate the waves and surge that slow swimmers down.
- moving bulkheads designed for complete flow-through wave absorption to prevent wave rebound.
- gutter and bulkhead surfaces finished with safe, slip-resistant GPM grating.



Crewe Lifestyles  
United Kingdom



Marriott Marquis Houston  
Houston, TX

# SPECIALTY POOLS

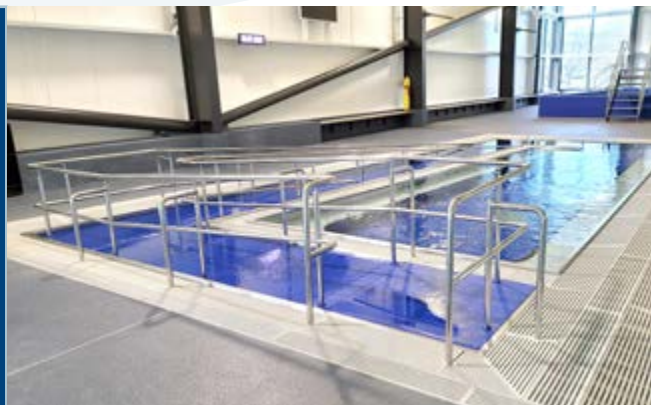
When planning a special pool that requires extra creativity, flexibility or structural know-how, Natare offers complete design solutions for today's innovative facilities.

Complete pool systems are available for custom design and fabrication for the most challenging aquatic environments including locker rooms, fitness centers, water parks, and more.

We have been involved in many types of swimming pool construction and water feature design projects:

from covering an entire mountain (amusement park attraction) with our Natatec® pool lining system, to building a lazy river in the shape of Texas, to the world's largest elevated infinity pool, we've done it all.

Whether in-ground, on-ground or elevated, there is a Natare pool to meet your project requirement, construction budget or schedule.



# UNIQUE SOLUTIONS

We provide all of the specialty components and equipment for a complete wave pool, water park or water playground attraction. Wave pools, wet playgrounds, spraygrounds and similar water features require a great deal of creativity, flexibility

and innovation. Natare offers complete design solutions for aquatic recreation and a wide range of products that address the particular needs of these unique facilities.



# WHIRLPOOLS, SPAS & HYDROTHERAPY POOLS

## THE HEALING POWER OF WATER

Natare stainless steel spas supply the soothing effects of water in motion for any aquatic facility.

A wide range of sizes, depths, and shapes are available in custom and standard configurations. Natare stainless steel spas include complete mechanical and filtration systems, access equipment, and more.

Single-piece or sectional pools and spas are fabricated in our plant and shipped to the project site for fast and easy installation. Natare spas can be part of larger pools or stand-alone systems to complement any facility design.



## BENEFITS

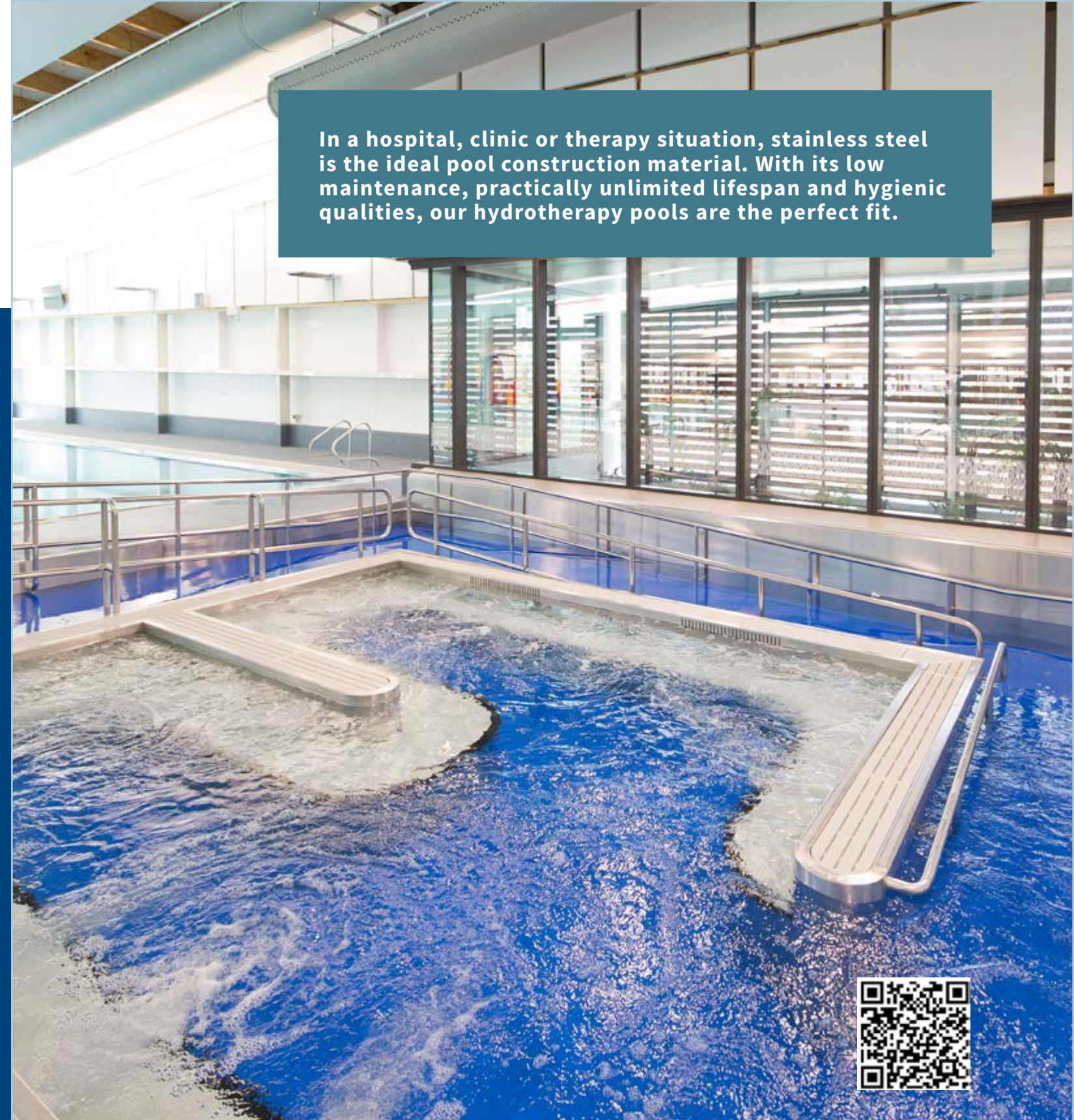
**1** HYDROSTATICALLY TESTED TO ENSURE WATERTIGHTNESS AND GUARANTEED TO REMAIN LEAKPROOF

**2** PRE-ASSEMBLED IN OUR FACILITY OR ON-SITE

**3** ASTM CERTIFIED SLIP-RESISTANT GRATING FOR SAFE AND SECURE WALKING AND TURNS

**4** VARIETY OF INTERIOR FINISH OPTIONS

In a hospital, clinic or therapy situation, stainless steel is the ideal pool construction material. With its low maintenance, practically unlimited lifespan and hygienic qualities, our hydrotherapy pools are the perfect fit.





Questions?  
Contact us today at:  
natare@natare.com



Since the early 1970s, Natare gutter systems have been the designer's choice for precisely engineered, highly durable pool perimeter systems.

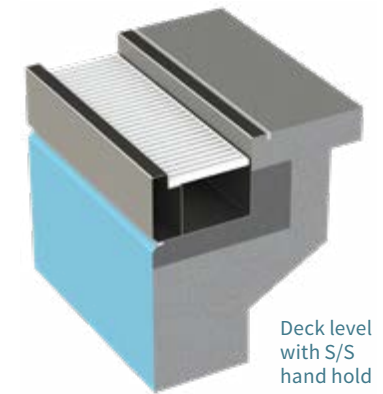
# PERIMETER GUTTER SYSTEMS

Natare perimeter pool gutter recirculation systems are pre-engineered, self-contained overflow gutters constructed from stainless steel. They reduce construction maintenance costs and provide a durable watertight distribution system that is ideal for competition or recreation environments.

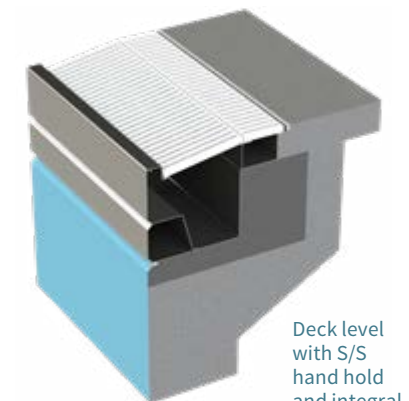
Manufactured to be smooth and perfectly level around the pool perimeter, our proven state-of-the-art Integrity™ Perimeter Gutter Series combine gutter, plumbing functions necessary for a clean and well-circulated pool.

Each system includes our integral pressurized return system, which eliminates the need for most buried supply piping and allows continuous, efficient water surfacing skimming.

Our perimeter pool gutters come standard with custom-fabricated GPM grating, a marine-grade polymer material that is extremely durable, slip-resistant, and low maintenance.



Deck level with S/S hand hold



Deck level with S/S hand hold and integral deck drain

## BENEFITS:

- stainless steel construction
- guaranteed watertight and “freeze-proof”
- ideal for renovation or new construction
- far less costly than concrete formed gutters
- variety of gutter choices dependent upon competition or recreation use
- available with automatic surge control weirs





Center Grove Natatorium  
Greenwood, IN

# MOVEABLE BULKHEADS

**Natare bulkheads (booms) are designed to provide varying course lengths and accommodate a variety of program activities in any size pool facility.**

Natare swimming pool bulkheads span the width of a swimming pool, creating a moveable bridge to divide a single activity pool into a multiple activity pool allowing different events to take place simultaneously. They are rigid, stable, and comply with all current World Aquatics (formerly FINA), USA Swimming, and NCAA requirements.

Our moving bulkheads are precisely engineered

structures, designed to provide varying course lengths (meters or yards) to accommodate fluctuating activities in any size pool or facility. The top and sides are covered with an ASTM certified slip-resistant GPM grating that dissipates wave rebound for competitive swimming, maintains proper water circulation, and provides a safe and secure walking and turning surface.

## BENEFITS:

- complies with all certification standards for national or international competition
- rigid one piece self-supporting stainless steel construction
- completely flow-through to prevent the wave rebound that interferes with competition
- easily moved to new positions; quickly locks firmly in position
- ASTM certified slip-resistant grating for great turns
- permanent lane and target markings

## ADDITIONAL OPTIONS:

**Hybrid Bulkhead (Shown Left):** In lieu of stainless steel the exterior trim above the water level is made from our GPM polymer material.

**Submersible Bulkhead:** Once lowered the bulkhead disappears into a trench and becomes part of the pool floor.

**Split or Single Lane Bulkhead:** You can offer short-course lanes and long-course lanes simultaneously within a 50-meter pool.



Precision-engineered for a long life

Mt. San Antonio College  
Walnut, CA

# MICROFLO® VACUUM SAND FILTRATION



Visit us online at:  
[www.natare.com](http://www.natare.com)

Receive excellent water quality and enjoy sparkling clear water at a fraction of the cost of typical pool filtration. MicroFlo filtration removes the smallest particles, including the dangerous cryptosporidium from pool water.

Make your water perfectly clean and clear with Natare's MicroFlo® swimming pool filtration systems.

Designed for dependability and high efficiency, with minimal maintenance and low operating costs, all MicroFlo filters are engineered to meet the rigid National Sanitation Foundation (NSF) standards.

They are fabricated from low carbon 316L stainless steel, (or standard carbon steel) with corrosion-resistant internal assembly. Available in a variety of sizes and options, MicroFlo is highly durable and

designed for decades of use in facilities with high bather loads.

If you are planning a new aquatic facility or renovating your existing one, or just need a little help with a perplexing pool filtration problem, call Natare today. You will receive expert advice from people who know pools and aquatic facilities.



## BENEFITS:

- stainless steel/PVC construction
- cost-effective; low maintenance and operating costs
- a complete ready-to-install filter plant that includes circulation, filtration, and treatment systems
- ideal for renovation or new construction
- removes particles one half the size of those removed by typical pressure filters, including cryptosporidium
- simplified operation and an extended 25-year warranty



### Natare MicroFlo Vacuum Sand Gen II Filter Control System (Optional)

Our Gen II filter control system offers complete control of all filtration and pool circulation, including:

- color touchscreen
- pump motor monitoring
- air pressure monitoring
- integrated Automatic Water Level Control
- digital level sensor
- make-up water valve monitoring
- control integral air release system
- pump inlet and discharge pressure monitoring
- BMS/BIS connectivity and interface



Visit us online at:  
[www.natare.com](http://www.natare.com)

**NATARE FACT:** Our stainless steel pools have been known to last for over 40 years.

# NATATEC® POOL LINING SYSTEMS

Natatec pool lining system dramatically reduces construction and renovation costs, limits maintenance, and greatly extends the lifespan of your pool facility.



Pool deck shown with SOLID surfacing. For more information see page 32.



Natatec is a multi-faceted and sophisticated installation technology system that comprises of a dense, high-quality, dual-layered, PVC membrane material that is specifically designed for commercial pool applications.

Natare pioneered the use of PVC pool lining systems in North America and it has since become the preferred method of constructing and renovating almost any size, shape, or type of commercial swimming pool.

Natatec consists of two flexible layers of PVC laminated with a strong inner core of polyester mesh fabric. It is custom-fitted and bonded on-site for a

tailored fit, ensuring an attractive, low maintenance, completely watertight, slip-resistant, and virtually indestructible pool surface.

Unlike conventional coatings, Natatec can be installed in nearly any weather. The drastic reduction of downtime for installation makes it possible to complete your pool facility in record time.

## BENEFITS:

- manufactured by RENOLIT, the world's largest producer of high-quality pool lining systems
- custom-fit and bonded on site
- suitable for all climates and weather extremes
- resists algae, mold and mildew
- long-lasting and durable; eliminates annual maintenance
- saves on water, chemicals and heat
- completely watertight
- 10/15-year warranty
- low maintenance
- experienced installers and dealers worldwide

# GPM GRATING



**Safe, durable, cost-effective grating for pool renovation or new construction.**

Natare GPM grating system is a long-lasting solution for changing rooms, athletic facilities, industrial applications, and most importantly, perimeter drainage in and around swimming pools, water features, and aquatic facilities. Its unique design has permanently machined flow control slots that allow for a fast water flow through the grating.

It is available in standard and custom colors, shapes, and sizes to fit any pool and can be custom engraved with your facility's name or logo. Due to its low maintenance finish, GPM grating will never need to be refinished or replaced.

GPM grating is custom fabricated from a marine-grade polymer and is environmentally stabilized to withstand the harshest sun and aquatic conditions. It will not rot, discolor, or delaminate and does not react with pool chemicals. Even repeated blows from a heavy hammer will not break GPM grating.



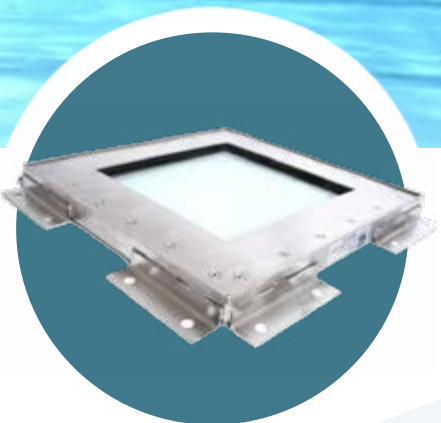
Crewe Lifestyles  
United Kingdom

**CONTACT US AT [NATARE@NATARE.COM](mailto:NATARE@NATARE.COM)  
OR VISIT OUR WEBSITE AT [NATARE.COM](http://NATARE.COM)**



## BENEFITS:

- guaranteed unbreakable
- low maintenance and easy to clean
- will not crack, flake, separate, rot, swell, splinter, or delaminate when exposed to aggressive water conditions
- permanent slip-resistant surface
- ideal for permanent depth markers and custom signage
- available in 1" (25mm) and ¾" (19mm) thicknesses
- 10-year full replacement warranty



# UNDERWATER WINDOWS

Natare's underwater observation windows are the perfect way to provide a clear view into a swimming or diving pool below the water line.

These windows are an invaluable aid for underwater photography, teaching and instruction, or they can be the ultimate view for competition. These strong windows are suitable for installation in any concrete or stainless steel pool.

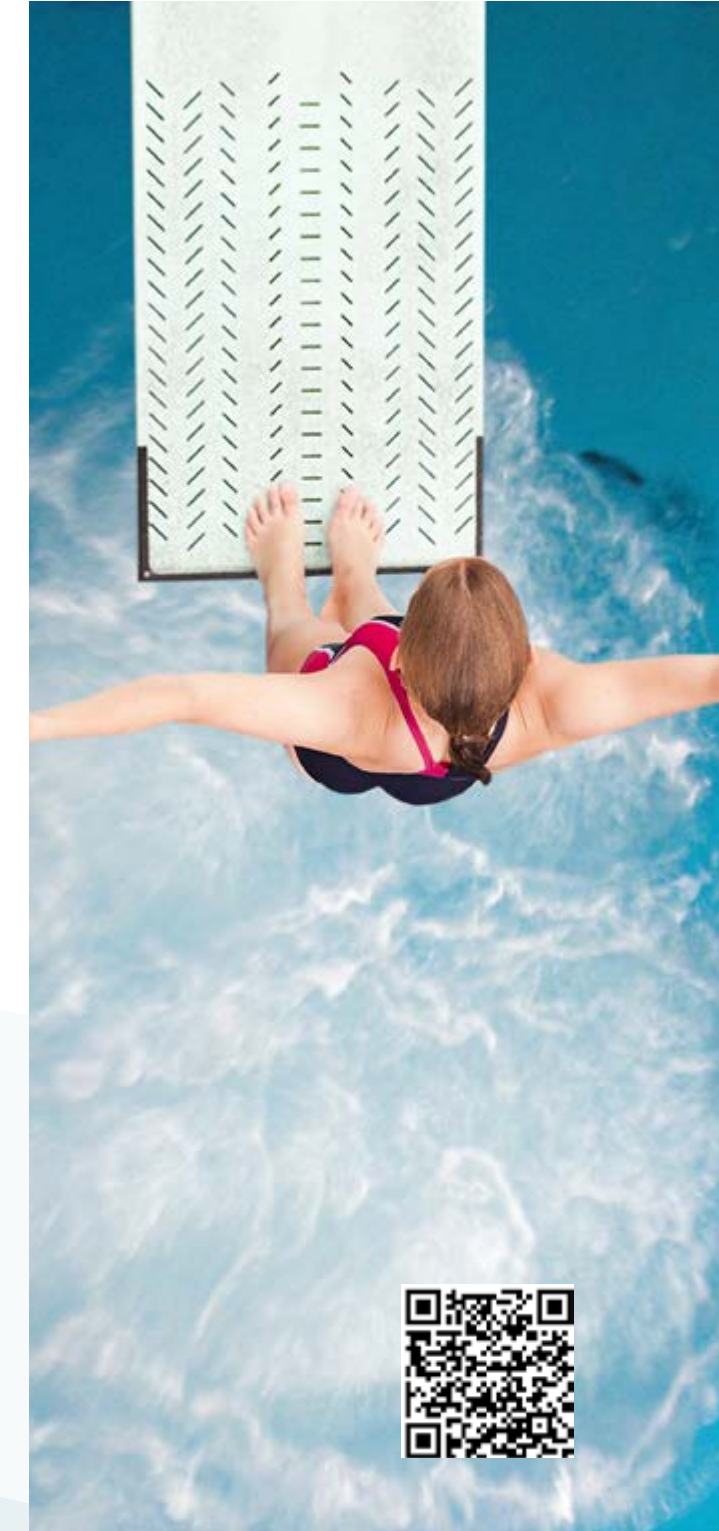


Our tempered glass is composed of transparent glass that is permanently laminated to a polyvinyl butyral (PVB) film. The result is a window that is much stronger and resistant to impact and heat.

# AIR CUSHION SAFETY SYSTEMS FOR DIVING

Natare sparger systems provide a mound of highly aerated water to cushion the diver's impact while offering a clear visual reference on the water's surface.

Bubbles are activated on demand by the coach or trainer using a handheld remote control that starts and stops the release of air. The bubbling action normally lasts for between 5 to 7 seconds, providing adequate time to coordinate the air release with the diver's entry into the water. The sparger nozzles are supplied by a high-capacity compressor and storage tank, which are located in a remote mechanical room or service area. Air safety cushion systems can be installed for permanent or temporary use, either during new construction or for existing pools.



Air cushion systems are regularly installed throughout the United States, Canada and Europe. The first installations were in Olympic caliber facilities such as the Indiana University Natatorium. Since 1971, air cushion safety systems have become a requirement for any facility with a top-quality diving training program.





# SURFACE FINISHES



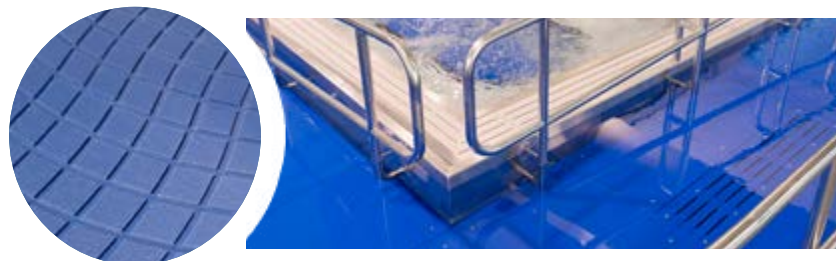
## NATATEC® SOLID



Natatec SOLID floor and deck surfacing creates a durable, watertight, and slip-resistant surface in areas where water or wet environments exist.

It is manufactured from a specially formulated PVC/polyester composite that can be installed over most floor and deck surfaces including wood, tile, and concrete. It is available in three neutral colors.

## NATATREAD™ SAFESTEP™ POLYMER DECKING



SafeStep is a unique semi-rigid polymer overlay with a decorative shaped surface that is incredibly durable, comfortable and absolutely slip-resistant.

Use for ramps, sloped entries, steps and stair surfaces, or just about anywhere that a durable walk, step or access surface is required. Comes in a wide range of standard and custom colors.

# NATACLEAR™ ACRYLIC

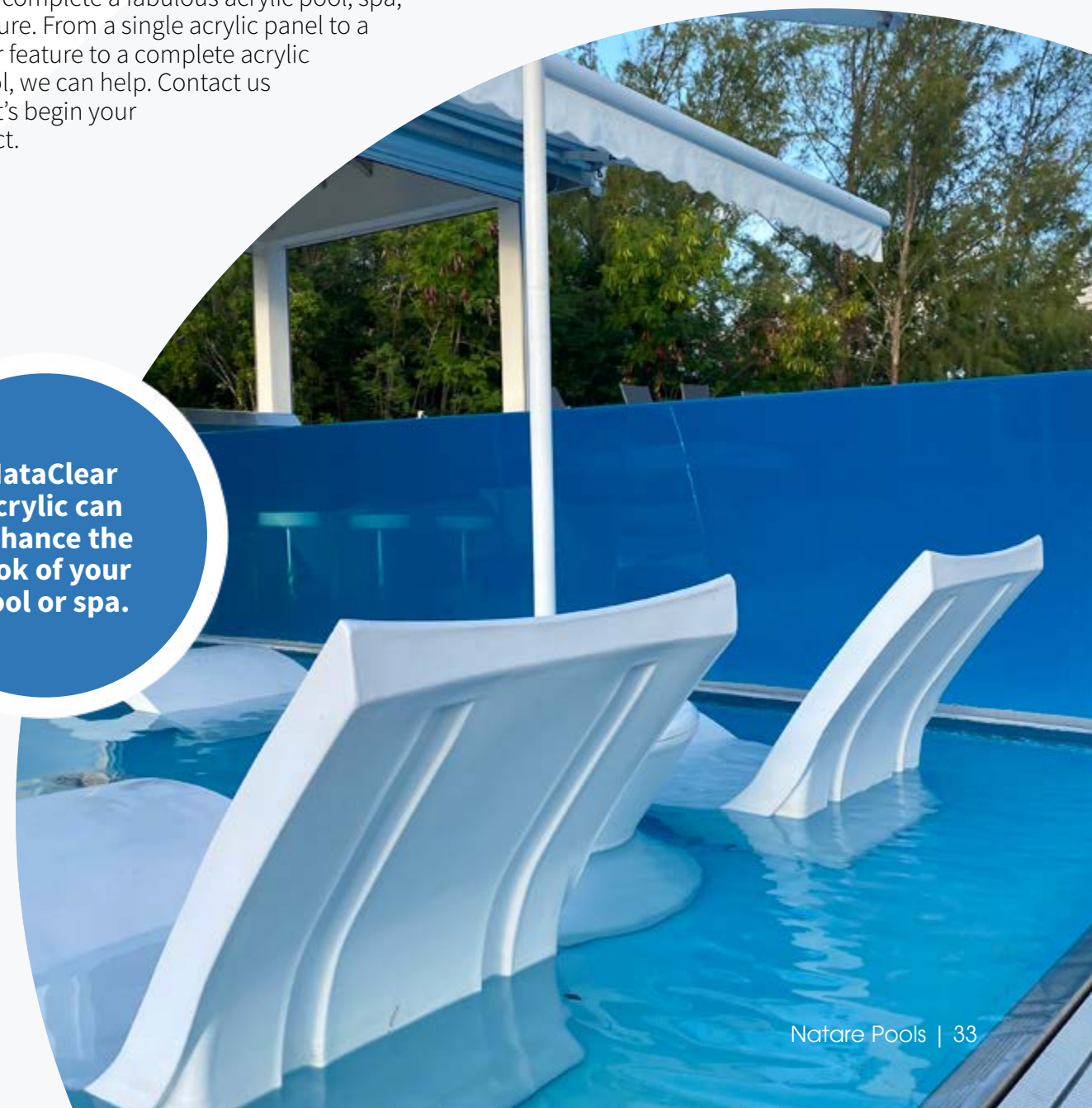


Whether new construction or a renovation project, a NataClear™ acrylic glass panel will bring a contemporary style and luxury look to your pool or spa. Add a striking infinity edge with water flowing over the panel or an underwater window for a unique view. Elevate your pool or spa to a new level of elegance and sophistication.

Natare has the professional expertise and experience necessary to complete a fabulous acrylic pool, spa, or water feature. From a single acrylic panel to a unique water feature to a complete acrylic elevated pool, we can help. Contact us today and let's begin your dream project.

**NATARE FACT:**  
Since 1969 we have completed over 7,500 projects around the world.

NataClear acrylic can enhance the look of your pool or spa.



# AQUATIC ACCESSORIES



## Completing Your Pool or Aquatic Facility

Natare manufactures a wide range of high-quality pool and spa components including deck equipment, underwater windows, starting platforms, access equipment, play features, jets, sprays and waterfall fountains. We can also supply custom designed components for any special pool configuration or any project that requires extra creativity and flexibility.



## Moving Floor Systems

Our cost-effective and reliable moving floor system adds great flexibility for your pool space. Water polo, early-childhood swim lessons and diving all require different depths. A moving floor can accommodate all activities. It also provides additional safety when not in use. Moving floors also provide an effective entry and exit for those unable to use conventional pool ladders.



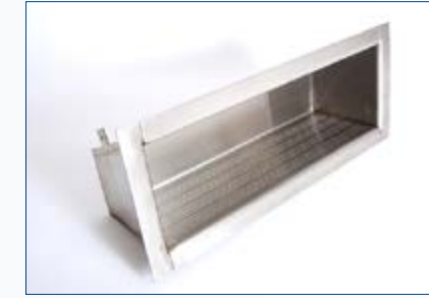
## Stainless Steel / Polymer Floor and Deck Draining Systems

Our deck drain and water removal systems provide you with a watertight drainage system that is custom fabricated to meet any building requirements. Covers come in either our GPM grating or stainless steel grating system.



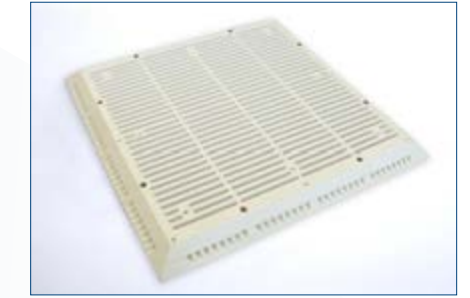
## Strainer Systems

MicroFlo® stainless steel strainers are constructed from low carbon 304/316 stainless steel. They feature a full-view polycarbonate cover that can easily be removed without tools, and a high-capacity stainless steel strainer basket with plenty of open area for long cleaning cycles. Available in standard and custom sizes for any flow rates.



## Stainless Steel Step Insets

Whether for renovation or new construction, our unbreakable stainless steel steps are perfect for any pool. They eliminate cracked or broken treads. Available as single or multiple step inserts, each step surface features our patented slip-resistant application to give users sure footing that doesn't wear off.



## VGB Safety Covers

Natare's safety drain covers are a simple solution to pool and spa codes. VGB compliant. Available in standard and custom sizes, our covers install over existing main drains and offer maximum safe pool use. Natare safety drain cover systems and custom main drains comply with the Federal Law, the ASME/ANSI A1 12.19.8, and ANSI/APSP/ICC-16 2017.



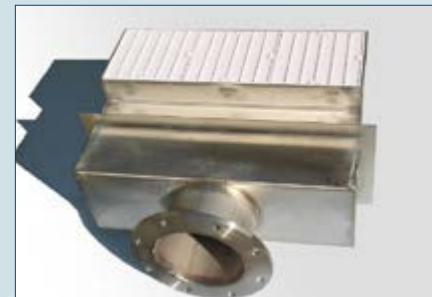
## Rope Hook Anchor Systems

Rope hooks are essential for all competition pools. Whether you have a stainless steel or concrete gutter system, our rope hooks are easily anchored into the pool system for a sure hold that won't twist out no matter how tight you make your lane lines.



## Custom Starting Blocks

Natare manufactures a wide range of competition-rated starting platforms. Fabricated from tough stainless steel and polymer materials, these platforms were developed for use with Natare bulkhead systems and decking. Whether a single pedestal, double support or base-mounted, our starting platforms include custom color tops, team logos, and a sturdy slip-resistant starting surface for the perfect competition environment. Compatible with all automatic judging and timing systems, Natare starting platforms meet all World Aquatics, YMCA, NFHS, NCAA, and USA Swimming requirements.



## Gutter Collector, Converter Overflow and Boxes etc.

The watertight, pre-engineered solution to constructing perimeter gutter systems, negative edge pools and overflow systems, our collector boxes provide a greater surface area to pull debris from the gutter into the strainer. This design ensures cleaner and clearer pool water. Reducing your construction costs and perfect for stainless steel or concrete gutters, Natare gutter collector boxes take the guesswork out of pool or water feature construction.



## Custom Main Drain Systems

Natare's main drain systems are custom fabricated for any project requirement. Easily installed with properly sized stainless flanges, our systems are unbreakable, watertight, and certified leak-free. Each drain system is ready for site installation and includes construction shields. Our systems come standard with our GPM grating system with the option of stainless steel or even our VGB safety cover system.



## Stainless Steel Railings

Natare can supply standard and custom fabricated stainless steel railings for use in and around swimming pools and recreational facilities. These stainless steel railings provide crowd control, functional protection and user safety while complementing other deck and facility equipment.



## Automatic Water Level Controller Systems

Natare's commercial-rated water level control system makes maintaining pool water levels a breeze. Never worry again about leaving the fill on or low water levels. This system provides worry-free operation and long life. The electronic millivolt sensing is completely safe and suitable for use in all pools, spas and specialty aquatic facilities.

Natare equipment, systems and services are available from a worldwide network of distributors, representatives and experienced specialty contractors. Whether it is new construction, renovation or operation, talk to Natare.



## Natare Pools

5905 West 74th Street | Indianapolis, IN 46278 | USA

(800) 336-8828 | (317) 290-8828

[www.natare.com](http://www.natare.com) • [natare@natare.com](mailto:natare@natare.com)

*Natare, the stylized N, MicroFlo and Natatec are trademarks of the Natare Corporation.*

*© Copyright 1997-2024 Natare Corporation. All rights reserved.*