

"THE IDEA THAT ALL POOLS ARE CREATED EQUAL
JUST DOESN'T HOLD WATER."



NATARE SPS POOLS

Panelized pool construction systems, pre-engineered to the exact requirements of each project.



Natare Pools

5905 West 74th Street | Indianapolis, IN 46278 | USA
(800) 336-8828 | (317) 290-8828
natare.com • natare@natare.com

**NATARE
FACT:** Our average pool project uses
over 7,000 pounds of stainless
steel.

Natare pools eliminate the waves and surge that can slow swimmers down. Natare gutters and bulkheads, finished with Natare GPM grating, create a neutral pool environment ideal for training and competition.

WHY US?



A Natare pool gives you something you won't find anywhere else — options. Whether you're renovating an aging concrete pool and simply need a colorful lining system to make it watertight, or you need a brand new aquatic facility built from scratch, we will tailor a pool for you.

Our rugged, unitized wall system is joined to a self-supporting structural support system called a "buttress," which ensures pool stability whether empty or filled. The entire system is individually engineered and structurally designed using the most comprehensive computer design and modeling tools to provide a complete three dimensional model long before manufacturing or construction begins. We

provide complete and detailed drawings for every pool we produce.

We build your pool's components in advance, at our Indianapolis manufacturing facility. The pool is then shipped in large pieces, ready for a quick and easy installation on-site in a few days.



CONTACT US AT NATARE@NATARE.COM OR VISIT OUR
WEBSITE AT NATARE.COM

STRUCTURAL PANEL SPS POOL SYSTEMS

A Natare Structural Panel System (SPS) is a bolted panelized pool construction system using 12-gauge stainless steel and a fully-welded gutter system. It is available in a wide range of shapes, sizes, and configurations and can be constructed anywhere in the world.

Compared to typical panelized pool systems, sealant is not relied on to maintain the watertightness between the panels. Our Natatec® PVC pool lining system is installed within the pool's interior to seal the pool completely from the gutter down.

The stainless steel perimeter gutter system is furnished with an integral supply tube that minimizes the perimeter pool plumbing required compared to typical panel systems with wall inlets. The SPS system combines the benefits of Natare welded perimeter gutter systems with the lower cost installation of the panelized pool system.



Kalumburu, Australia



Klumburu, Australia

FEATURES & BENEFITS:

- lower initial cost, lower installation time, and longer life
- certified to all current USA Swimming, FINA, NCAA, YMCA and NFHS standards
- ideal for recreational swimming, hydrotherapy and water aerobics
- green — 100% recycled stainless steel
- saves on water, chemicals and heat
- heavy-gauge stainless steel construction
- integral supply tube that minimizes the perimeter pool plumbing



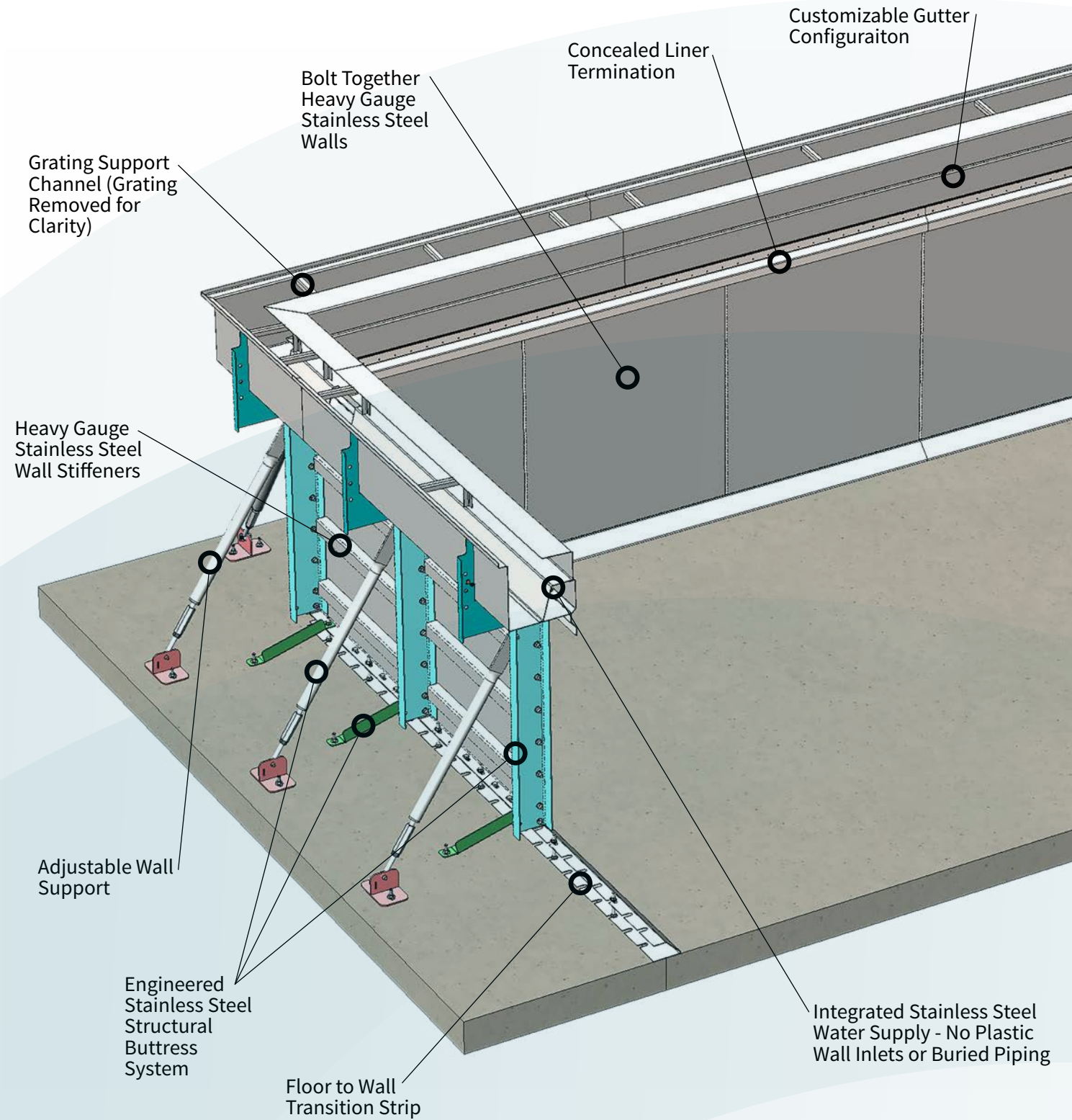
Visit us online at:
www.natare.com

WHAT IS A SPS POOL SYSTEM?

Natare SPS Structural Panel Pool Systems are stainless steel panelized modular construction systems for fast, cost-effective pool construction anywhere in the world.

Primarily used for in-ground installation, the SPS Pool System is ideal for natatoriums, recreational facilities, and environments where typical pool construction methods are not possible.

An SPS System is shipped as a kit to be assembled entirely on-site. Each panel section is 1m wide with a height that can vary across the pool.



Questions? Contact us today at natare@natare.com

Visit us online at www.natare.com

VISIT OUR WEBSITE FOR DOWNLOADABLE DOCUMENTS

FOR MORE INFORMATION USE THE QR CODES LOCATED ON EACH PRODUCT PAGE

CONTACT US TODAY TO SEE HOW WE CAN BUILD YOUR PROJECT ON BUDGET



Visit us online at:
www.natare.com

NATARE Our stainless steel pools have
FACT: been known to last for over 40
 years.

Our Natare SPS Pool Systems are quickly and easily constructed to the most popular sizes of rectangular, rectilinear and radius pool shapes. Typical lap or competition pools include the standard 25 yard, 25 meter and 50 meter pools in configurations suitable for any level of competition or training. Radius sections or shapes are available, and Natare pools can be configured to provide an unlimited array of pools.

QUICK & EASY INSTALLATION

Natare SPS wall panels are quickly bolted together to form the pool perimeter. Once the pool panels are joined and attached to the accompanying buttress systems, the overall pool is stable and self-supporting. Now, the stainless steel gutter sections are ready to be welded into place.

Natare Wall Panel Systems are available in a range of shapes, heights and sizes to meet any pool configuration requirements. Natare SPS Pool Systems combined with standard perimeter gutter systems and pool surround accessories to provide water depths to 118 in. (3m) as standard and custom engineered to any depth. When used in conjunction with conventional piping systems, Natare Wall Panel Systems are precisely machined to accept recirculation fittings, lights, drain openings or any size, shape or configuration of opening.

Stainless steel
 provides a
 longer lifecycle
 and reduced
 maintenance.

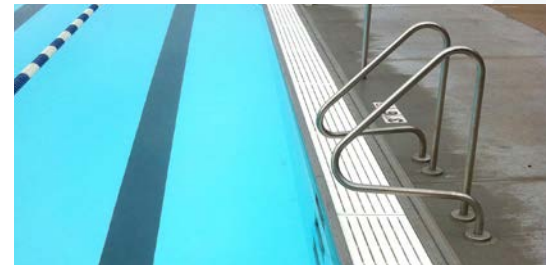
NATARE PRODUCTS AND SYSTEMS

Questions?
Contact us today at:
natare@natare.com

Natare has long been recognized as a world leader in the swimming pool, aquatics and water feature industry. We design, manufacture, and supply high-quality pools, equipment and systems for new construction or renovation of commercial, institutional and public aquatic facilities and water features. Throughout the years, we have developed the most complete selection of specialty equipment and systems available for any aquatic project.

Perimeter Gutter Systems

Integral perimeter recirculating systems or overflow channel return systems provide the ultimate pool surround. Available in deck-level, semi-recessed, or fully recessed configurations in single channel, double channel, and positive suction return.



Natatec® Pool Lining Systems

Simply the most durable, cost-effective, and functional pool interior waterproofing system available. Build or renovate pools your way with the freedom to create attractive, functional, and watertight pool facilities.

Natare Fixed and Movable Bulkheads

The answer to multipurpose, functional pool systems, Natare pool bulkheads are world renowned for the perfect competition systems. Vertically deployed or laterally moved, Natare bulkheads are available for any pool configuration.



Grating Systems

Exclusive GPM polymer grating systems for pool surrounds, overflow systems or any pool, spa, or recreational environment. The first certified slip-resistant grating with a 10-year full replacement warranty.

MicroFlo® Filtration

High-capacity stainless steel vacuum sand and pressure filters in vertical or horizontal configurations. Available in sizes suitable for even the largest swimming pools, spas or water features; we sell the most economical, durable, and highest purity filtration available. An entire pool recirculation, filtration, and control system ready for fast, easy, and economical pool or water feature construction.



Underwater Windows and Observation Systems

Natare underwater observation windows are the perfect way to provide a clear view into the swimming or diving pool below the water and are an invaluable aid for underwater photography, teaching and instruction, or for the ultimate view of competition.

WHY SPS?

1 DURABLE AND LOW MAINTENANCE

The cracking, bulging, and deterioration of typical concrete pool construction is eliminated because stainless steel resists the effects of hard use, weathering, and settlement.

2 QUICKLY ASSEMBLED ON-SITE

Each of our stainless steel pools are individually engineered and structurally designed using the most comprehensive computer design and modeling tools.

3 VIRTUALLY INDESTRUCTIBLE

Our pools are complete stainless steel structures, pre-engineered to the exact project requirements.

4 FLEXIBLE DESIGN OPTIONS

Our pools are available in a wide range of shapes, sizes, and configurations and can be constructed anywhere in the world.

Natare equipment, systems and services are available from a worldwide network of distributors, representatives and experienced specialty contractors. Whether it is new construction, renovation or operation, talk to Natare.



Natare Pools

5905 West 74th Street | Indianapolis, IN 46278 | USA

(800) 336-8828 | (317) 290-8828

www.natare.com • natare@natare.com

Natare, the stylized N, MicroFlo and Natatec are trademarks of the Natare Corporation.

© Copyright 1997-2024 Natare Corporation. All rights reserved.